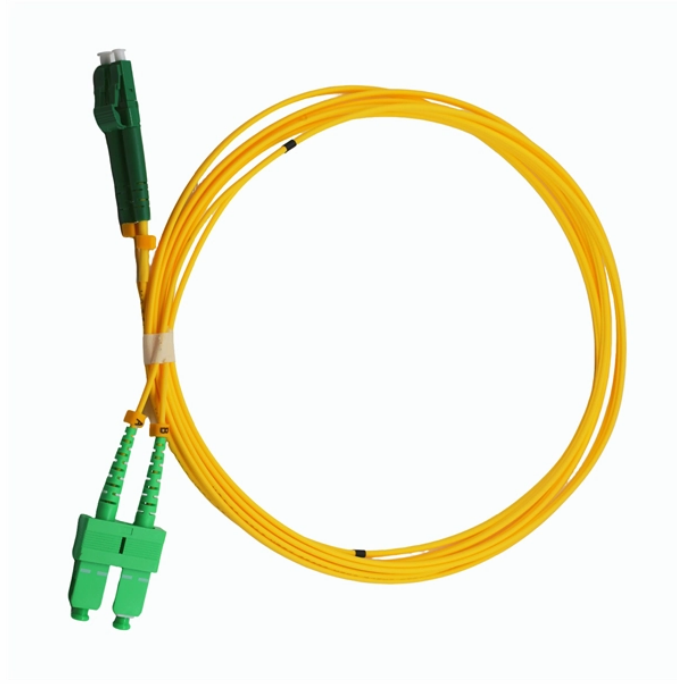
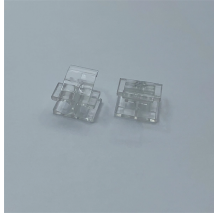


## Specifications of Dutch Long-Span Cable Trays



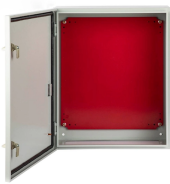
## Specifications of Dutch Long-Span Cable Trays



The National Electrical Manufacturers Association (NEMA VE-1) USA, classifications for Cable Trays were established to simplify and standardize the specifications of Cable Trays.



NEMA VE 1-2017 Specifies requirements for metal cable trays and associated fittings designed for use in accordance with the rules of Canadian Electrical Code, Part I and the National Electrical Code®



For each design of cable tray, two specimens shall be tested. An unspliced straight section of the greatest width shall be used in each test. ABB decided to conduct further testing on multiple length to width ...



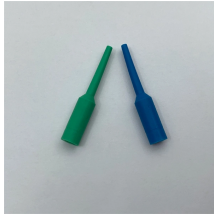
Our wind certification report provides you with list of acceptable B-Line series cable tray supports, fittings and covers based off of the environmental conditions, cable loading, and type of cable tray in your ...



Our cable tray design considerations guide details key factors to consider when designing cable tray systems for industrial and commercial applications. Browse or download the cable tray catalog for ...



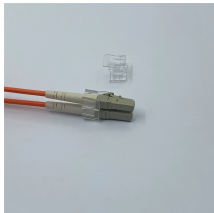
This document provides guidance on designing cable tray systems for commercial and industrial applications. It discusses key factors to consider such as cable tray types, lengths, strength, load ...



Specifications and drawings are for assistance and guidance, but exact routing, locations, distances and levels will be governed by actual field conditions. Contractor is directed to make field surveys as part ...



GRP standard span cable tray and fittings are pressed from glass reinforced polyester resin, using hot moulding technology and facilitating the manufacture of smooth intricate shapes.



Review the number and type of cable from the job specifications and requirements. Cable fill in a tray is calculated by using data and criteria specified in NEC 392.



This document provides specifications for perforated and solid cable tray systems including:  
- Straight sections that come in various heights, bottom types, return ...



Find out all of the information about the OBO Bettermann product: long-span cable tray . Contact a supplier or the parent company directly to get a quote or to find ...



Flextray Cable Tray and Accessories are available in a wide variety of finishes to meet the environmental or aesthetic requirements of customer installations. Use the list below to find the finish ...



Wide span cable tray, acc. to DIN EN 61537, with continuous perforated and beaded side rails as well as riveted bottom with offset perforation and perforated cross beads for stabilisation and barrier strip ...

## Contact Us

For more information, pricing, or custom energy solutions, please contact us:

Website: <https://gdroofing.co.za>

Email: [sales@gdroofing.co.za](mailto:sales@gdroofing.co.za)

Phone: +27 72 418 9365

Address: 22 Electron Avenue, Isando, Johannesburg, 1600, South Africa

This document is for informational purposes only. Specifications subject to change without notice.

