

Specifications of Low-Voltage Cable Tray Supports



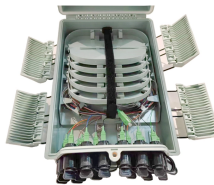
Specifications of Low-Voltage Cable Tray Supports



CEAS Stiffy Fig 220 Low Voltage Trapeze. 200 Series Low Voltage Supports, Ideal for use with CAT 5e, CAT 6, CAT 6A, CAT 7 and Fiber Optic Cable construction applications.



Cable tray length is selected based on the load to be supported, the distance between the supports (also referred to as the span), and handling and installation constraints.



Hubbell's NEXTFRAME® Ladder Tray is the effective and widely used cable runway that supports and delivers bundles of cable between cabinets, racks, and closets, along walls, and suspended from ...



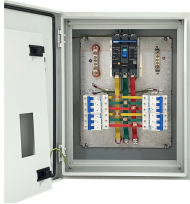
CEAS Stiffy Fig 220 Low Voltage Trapeze. 200 Series Low Voltage Supports, Ideal for use with CAT 5e, CAT 6, CAT 6A, CAT 7 and Fiber Optic Cable construction ...



NEMA VE 1-2017 Specifies requirements for metal cable trays and associated fittings designed for use in accordance with the rules of Canadian Electrical Code, Part I and the National Electrical Code®



The nVent CADDY Wire Basket Tray System is an industry leading continuous pathway support solution for today's high-performance cabling systems. Highly engineered features help ensure a secure ...



A job site, field adaptable support system primarily for low voltage telecommunication and fiber optic cables. These systems are typically steel wire mesh, zinc plated.



The load capacity of the cable trays according to the support width can be read off in the diagram using load curves - here, shown as an example for a cable tray with the tray widths 100 to 600 mm.



Fasten and support cables that pass from one cable tray to another or drop from cable trays to equipment enclosures. Fasten cables to the cable tray at the point of exit and support cables ...



Discover a professional 5-step guide on how to choose the right cable tray for low voltage system. Learn about types, sizing, standards for reliable installations.



Explore precision-engineered Wire Mesh Tray built from high-quality welded steel, offering a safe, reliable pathway for low-voltage and data cables with a patented load-optimized design.

Contact Us

For more information, pricing, or custom energy solutions, please contact us:

Website: <https://gdroofing.co.za>

Email: sales@gdroofing.co.za

Phone: +27 72 418 9365

Address: 22 Electron Avenue, Isando, Johannesburg, 1600, South Africa

This document is for informational purposes only. Specifications subject to change without notice.

