

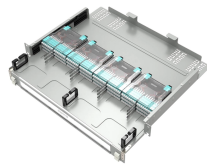
Specifications of the steel wire for fixing the optical cable terminal box



Specifications of the steel wire for fixing the optical cable terminal



This document provides a list of items and their descriptions for a joint box used for optical ground wire (OPGW) and optical fiber cable (OFC) on towers. It includes ...



This Reference Manual spotlights the OPGW installation instructions required in the field. ZION offers detailed installation instructions on the proper techniques for installing OPGW cables.



The materials used shall be: Aluminum clad steel (ACS) and/or, Aluminum alloy (AA) wires for outer conducting layer (armor) and inner conducting layer (if additional layer is used). Glass . Metallic ...



ADSS dead-end fitting use: The dead-end fitting is mainly used for fixing and anchoring overhead self-supporting ADSS optical cable lines. It is generally installed in terminal towers, tight-line tension ...



Wire strands are replaced with fibre-filled stainless steel tubes Fibre tubes are helically stranded alongside the wires Fibre strain margin is increased relative to core tube designs Loaded sag can be ...



2.1.1 Optical fibre cables (both for overhead and underground installation) shall be designed, manufactured and tested in accordance with the relevant parts of the Standards listed in this section ...



Cable stress relief and environmental sealing between the cables and splice, or the cables and the connectors, to prevent the entry of external contaminants and to provide protection from both cable ...



The bending radius of optical cable during laying process should be effectively guaranteed to avoid “gold hooks” and avoid too much tension, abrasion and too many times of twists and turns.



6.3.2 Closure housings shall be manufactured from aluminium alloy, galvanized steel & acid-proof stainless steel and shall be designed and fabricated to provide a secure, stable, pressure-tight, ...



This document provides installation guidelines for optical ground wire (OPGW). Section 2 discusses preparation for OPGW installation, including establishing engineering plans, preparing tools like ...

Contact Us

For more information, pricing, or custom energy solutions, please contact us:

Website: <https://gdroofing.co.za>

Email: sales@gdroofing.co.za

Phone: +27 72 418 9365

Address: 22 Electron Avenue, Isando, Johannesburg, 1600, South Africa

This document is for informational purposes only. Specifications subject to change without notice.

