

Specifications of the triple-play optical distribution box

50km/spool



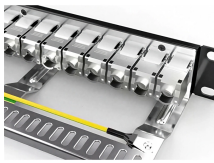
Specifications of the triple-play optical distribution box



Product introduction: FTTH outdoor wall-mounted optical splitter box is used for the wiring connection of optical cable and optical communication equipment. Through the adapter in the ...



□Product Specifications□: Floor-mounted, Wall-mounted, Triple-Play, Quadruple-Play, Plug-in, Box-type, No Jumping Connection, No Splicing, (Outdoor Waterproof Type)



These boxes are based on the mature Gigabit GPON technology, which have high ratio of performance to price, and the technology of 802.11n WiFi (2T2R), Layer 2/3 and high quality VoIP as well.



In the network of integration of three networks, signal of CATV system is transmitted in the same fiber with upstream and downstream optical signal of PON system by adopting WDM technology.



Whether it will be used as splice storage or as distributor housing, there is enough space in the rugged plastic ODB 54 housing for accommodating up to 24 glass fiber ports.



It describes the components and features of FDBs, including their waterproof design, fiber management capabilities, splitter installation options, and environmental ...



PRIMEX Product Specifications 1. PRODUCT SUMMARY The Primex Verge PMX900 Triple Play Media Distribution Enclosure brings simple voice, data and video services into small MDU's and single ...



This paper proposes two fiber-to-the-home bi-directional architectures for triple-play distribution services as being investigated in FIVER project. First, a coarse wavelength division multiplexing (CWDM) ...



To ensure consistent performance and longevity, it is essential to adhere to strict technical specifications. This article delves into the intricacies of the fiber distribution box, exploring its various ...



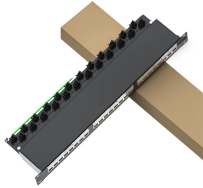
The JUNPU Optic Fiber Distribution Box (FDB box) is a versatile and reliable enclosure designed for organizing and protecting fiber optic cables and connections. It offers cable management features, ...



Optical Distribution Box 48 (ODB-48): This outdoor enclosure is designed for FTTH PON and P2P networks. It can accommodate up to 96 fusion splices, plus 24 SC simplex or LC duplex adapters ...



JP3221EAP (2RU) series is a low noise, high performance, FTTP high power, multi-ports optical amplifier with gain spectrum band within 1540~1563nm. Each output port for optical amplifier has ...



Revolutionize FTTH deployments with our IP68 optical distribution box. Save 60% installation time with plug-and-play technology and weatherproof design. Get a quote today!



Connection Technology Systems (CTS) FWR-2105-WF-G series triple play solution is a Web & SNMP managed ber optical residential gateway which is designed to meet the FTTH deployment for ...

Contact Us

For more information, pricing, or custom energy solutions, please contact us:

Website: <https://gdroofing.co.za>

Email: sales@gdroofing.co.za

Phone: +27 72 418 9365

Address: 22 Electron Avenue, Isando, Johannesburg, 1600, South Africa

This document is for informational purposes only. Specifications subject to change without notice.

