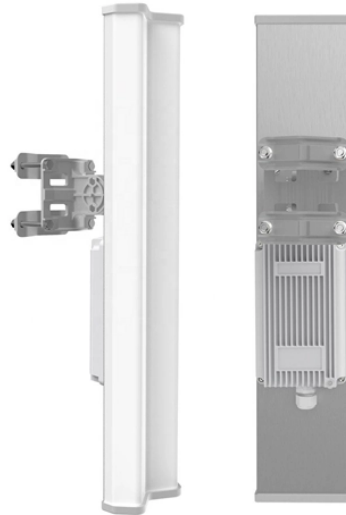


# Standard Configuration Diagram of Electrical Distribution Box



## Overview

A detailed diagram of a breaker box, showing its components and how they function to protect electrical systems from overloads and faults. It is responsible for distributing electricity from the main power source to various circuits throughout. This is the design philosophy which the browser-based distribution board configurator from Eaton is based on. Distribution board configurator for different types of buildings. The distribution board configurator from Eaton is a multifaceted, web-based configuration tool for electrical distribution. Distribution box The system diagram usually shows the electrical connection and configuration inside the distribution box in a graphical way, including busbars, circuit breakers, fuses, load devices and other elements.

## Standard Configuration Diagram of Electrical Distribution Box



Learn about the electrical sub panel diagram, including its components and how it is connected to the main panel. Find helpful tips and diagrams for installation and troubleshooting.



Find out how to properly wire an electrical panel box with a comprehensive diagram and step-by-step instructions.



Learn how to read and understand wiring diagrams for breaker boxes to ensure proper electrical configurations and safety measures.



Learn about the electrical sub panel diagram, including its components and how it is connected to the main panel. Find helpful tips and diagrams for installation and ...



A detailed diagram of a breaker box, showing its components and how they function to protect electrical systems from overloads and faults.



By reading the distribution box system diagram, you can understand the electrical connection and configuration of the distribution box, which provides a strong guarantee for the safe ...



Here you can select the type of mounting of the small distribution board, the mains system, the desired type of connection and the need for surge protection using simple menus or selection fields.



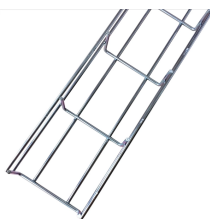
This guide is intended to present the fundamentals of power system design for commercial and industrial power systems. It is not designed as a substitute for educational. The ...



Instead of providing 120 VAC, these “doubles” provide 240 VAC to the load. Note that the breakers are across both L1 and L2. A tie bar physically connects the two breakers together. Locations 17, 18, 19, ...



Design of Electrical Distribution Panel - Free download as PDF File (.pdf), Text File (.txt) or read online for free. This document outlines the design and functionality of electrical distribution panels, detailing ...



For the new college graduate from a four-year electrical engineering curriculum working in the field of commercial and industrial power systems, this guide can serve as a starting point for ...

## Contact Us

For more information, pricing, or custom energy solutions, please contact us:

Website: <https://gdroofing.co.za>

Email: [sales@gdroofing.co.za](mailto:sales@gdroofing.co.za)

Phone: +27 72 418 9365

Address: 22 Electron Avenue, Isando, Johannesburg, 1600, South Africa

This document is for informational purposes only. Specifications subject to change without notice.

