

## Standard Size of Factory-Specific Electrical Distribution Boxes



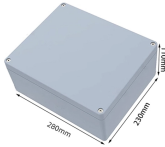
## Standard Size of Factory-Specific Electrical Distribution Boxes



Our distribution boxes are perfect for industrial environments, catering to automation, robotics, and processing facilities. They provide cost-effective solutions through automated dispensing and ...



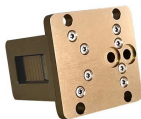
NEC® Reference stallation and use of boxes. The article includes table references that guide the electrician in the selection of the proper box size necessary to safely accommodate electrical service ...



Choosing the right electrical box size is crucial for safety and efficiency. Consider the number of devices and future upgrades to avoid overcrowding. Single-gang boxes are ideal for one ...



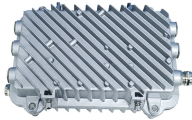
Understanding standard electrical box sizes and dimensions helps engineers and installers select the appropriate enclosure for each application. Choosing the correct electrical box ...



Area boxes can be installed in technical flooring or in false ceilings. Area boxes are offered in Cat. 5e and Cat. 6 and should be selected according to the size of the network.



Electrical enclosure sizes are not universal, but most manufacturers follow common size families. This guide explains typical wall-mount and floor-standing dimensions, how to read catalog ...



Our XBoard series delivers safe, reliable and high performance protection of the electrical power distribution systems that meet regulations and standards. Eaton has a comprehensive range of ...



Learn standard electrical box dimensions for outlets, switches, and junction boxes. Compare sizes, depths, volume, and clearance for safe installations.



Find the right electrical enclosure size for any project. This guide covers standard sizes, selection tips, ratings, and sizing charts.



Explore standard panel sizes, applications, and key differences for residential, commercial, and industrial use.

## Contact Us

For more information, pricing, or custom energy solutions, please contact us:

Website: <https://gdroofing.co.za>

Email: [sales@gdroofing.co.za](mailto:sales@gdroofing.co.za)

Phone: +27 72 418 9365

Address: 22 Electron Avenue, Isando, Johannesburg, 1600, South Africa

This document is for informational purposes only. Specifications subject to change without notice.

