

Standard dimensions for openings in the middle layer of distribution boxes



Overview

28 provides the mathematical formulas for sizing these boxes based on the size of the conduits entering them. For “straight pulls,” the length of the box must be at least eight times the trade size of the largest raceway. stalling and use of boxes. Choosing the proper enclosure requires fluency in the language of gangs, physical footprint, and—most importantly— internal. Choosing the correct electrical box dimensions is essential for safe wiring, code compliance, and long-term reliability. Whether you are installing outlets, switches, lighting fixtures, or junction connections, box size directly affects wire fill capacity, device fit, and installation quality. This. Design requirements for low voltage distribution boxes cover NEC, IEC, and safety standards to ensure reliable, compliant electrical installations. You must make safety your top priority when working with low voltage distribution boxes.

Standard dimensions for openings in the middle layer of distribution



Electrical enclosure sizes are not universal, but most manufacturers follow common size families. This guide explains typical wall-mount and floor-standing dimensions, how to read catalog ...



Explore standard panel sizes, applications, and key differences for residential, commercial, and industrial use.



You need to understand the main standards and codes that guide the safe design and use of low voltage distribution boxes. These rules help you meet legal requirements and keep your ...



Explore NEC-based standards, box dimensions, material guidelines, and installation precision in this complete electrical junction box selection and compliance handbook.



NEC® Reference installation and use of boxes. The article includes table references that guide the electrician in the selection of the proper box size necessary to safely accommodate electrical service ...



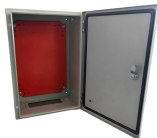
Electrical enclosure sizes are not universal, but most manufacturers follow common size families. This guide explains typical wall-mount and floor ...



General Technical Particulars for LT Distribution Boxes : - The L.T. Distribution Boxes should be of the dimensions as per the drawing & details in the table furnished.



I will be installing the appropriate cable connectors into and out of those J-boxes. This electrical wiring question came from Jan, a Homeowner in Atascadero, California.



This guide explains standard electrical box dimensions by type, compares common sizes, and helps you select the right box for residential, commercial, and light industrial applications.



For larger commercial installations, pull boxes and conduit bodies (like LBs or Ts) are used to facilitate wire pulling. Section 314.28 provides the mathematical formulas for sizing these ...



This document provides specifications for various distribution boxes including dimensions, mounting sizes, and number of ways. It includes specifications for TOP-TS, TOP-TF, TOP-LS, TOP-PS, TOP ...



You need to understand the main standards and codes that guide the safe design and use of low voltage distribution boxes. These rules help you meet ...

Contact Us

For more information, pricing, or custom energy solutions, please contact us:

Website: <https://gdroofing.co.za>

Email: sales@gdroofing.co.za

Phone: +27 72 418 9365

Address: 22 Electron Avenue, Isando, Johannesburg, 1600, South Africa

This document is for informational purposes only. Specifications subject to change without notice.

