

# Standard dimensions for wiring slots in distribution boxes



## Overview

This guide explains typical wall-mount and floor-standing dimensions, how to read catalog sizes, and how to choose the right enclosure size for your layout. Choosing the correct electrical box dimensions is essential for safe wiring, code compliance, and long-term reliability. Picking the right size helps you stay safe, follow. 10 [10 m (32. 81 ft)] for standard cable lengths. Wiring diagram shows both PNP and NPN wiring. Dimensions are shown in mm (in.



## Standard dimensions for wiring slots in distribution boxes



One of the mistakes often made is over loading an wire electrical box with too many wires. This will cause switches and outlets to not fit correctly and could even cause wires to become damaged. This ...



- 4" square extension rings are added to junction boxes to increase wiring capacity and provide access for additional conduit runs and electrical wire
- Extension rings prevent the need to remove old ...



Linkwell offers a wide range of electrical box dimensions, so you can always find the right fit for your industrial or commercial project. Tip: Always measure your space before you install your box.



NEC® Reference stallation and use of boxes. The article includes table references that guide the electrician in the selection of the proper box size necessary to safely accommodate ele trical service ...



General Technical Particulars for LT Distribution Boxes : - The L.T. Distribution Boxes should be of the dimensions as per the drawing & details in the table furnished.



Area boxes can be installed in technical flooring or in false ceilings. Area boxes are offered in Cat. 5e and Cat. 6 and should be selected according to the size of the network.



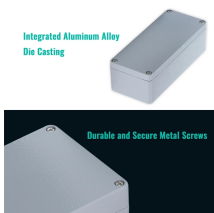
10 [10 m (32.81 ft)] for standard cable lengths. Two provided with box. One set provided with box. Dimensions are shown in mm (in.). (1) Replace x with 1 [1 m (3.28 ft)], 2 [2 m (6.56 ft)], 3 [3 m (9.84 ...



Learn standard electrical box dimensions for outlets, switches, and junction boxes. Compare sizes, depths, volume, and clearance for safe installations.



Electrical enclosure sizes are not universal, but most manufacturers follow common size families. This guide explains typical wall-mount and floor-standing dimensions, how to read catalog ...



Understanding standard electrical box sizes and dimensions helps engineers and installers select the appropriate enclosure for each application. Choosing the correct electrical box ...



Electrical enclosure sizes are not universal, but most manufacturers follow common size families. This guide explains typical wall-mount and floor ...

## Contact Us

For more information, pricing, or custom energy solutions, please contact us:

Website: <https://gdroofing.co.za>

Email: [sales@gdroofing.co.za](mailto:sales@gdroofing.co.za)

Phone: +27 72 418 9365

Address: 22 Electron Avenue, Isando, Johannesburg, 1600, South Africa

This document is for informational purposes only. Specifications subject to change without notice.

