

Standard dimensions of cable tray fixing brackets



Overview

International projects are most often made in widths of between 50mm and 900mm and depths of between 50mm and 150mm. The majority of the sections have a length of 3 meters, as this is easy to transport and can be compactly placed on the shipping trucks. In practice, cable tray dimensions are a system of interrelated measurements—width, depth, length, and material thickness—that directly affect cable fill compliance, heat dissipation, structural loading, and long-term expandability. From an engineering standpoint, cable tray dimensions are not. us-trations without notice. The mechanical and electrical characteristics, tests, certifications, overall quality management, recommendations mentioned. en completely installed, without damage either to conductors or structural system use maintain spacing or to keep cables in place when the tray is ect the minimum bend ra-dius for cables as they exit the bottom of the cable tray. Single Conductor Cables enable cables of equivalent construction & conductor material to be functioned at varying maximum ampacities based on how the cables are physically placed in ladder. Hubbell's NEXTFRAME® Ladder Tray is the effective and widely used cable runway that supports and delivers bundles of cable between cabinets,

racks, and closets, along walls, and suspended from ceilings. The Ladder Tray features light, rugged, tubular steel construction. offers various supports for its Snap Track products including hangers, brackets and clamps. Scroll to bottom of page to view All Hangers Cut Sheets Support Locations- Cable Tray (Reference: NEMA VE-2 Current Issue) Supports should be located so that connectors (splice joints) between.

Standard dimensions of cable tray fixing brackets



Learn how to calculate the perfect cable tray size and dimensions for your electrical project. This guide covers load capacity, fill ratios, and industry standards.



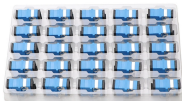
The standard lengths for cable trays are 10, 12, 20 and 24 feet - up to 40 foot lengths are available (consult B-Line for the availability of nonstandard cable tray lengths).



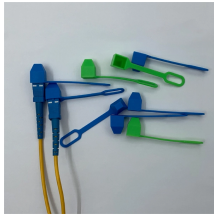
It shall contain 50 lbs/ft of cables and support 15 lbs/ft of snow load. It is also required to support a 250 pound concentrated static load applied in the center of the tray width. * CSA Classes D and E are ...



Cable tray length is selected based on the load to be supported, the distance between the supports (also referred to as the span), and handling and installation constraints.



We will first explain standard cable tray dimensions used across the industry, then examine how dimensions vary by tray type, and finally show how to calculate and select the correct ...



We will first explain standard cable tray dimensions used across the industry, then examine how dimensions vary by tray type, and finally show how to ...



Supports should be located so that connectors (splice joints) between horizontal runs fall between the support point and quarter point of the span. The Support Span should not be greater than the straight ...



Complete cable tray sizing guide with standard size chart, NEC calculation methods, and real engineering examples. Learn how to select the right cable tray dimensions for your project.



The document outlines steps for laying cables, including installing supports, fixing the tray, laying cables with proper spacing, and tying them with cable ties. Specifications are provided for tray dimensions ...



Many electrical systems employ cable trays. They route cables safely & efficiently. NEC defines minimum cable tray size & electrical installation specifications. These guidelines protect ...



The various standards STANDARD IEC 61 537 “INTERNATIONAL ELECTROTECHNICAL CONTRACTORS STANDARD FOR CABLE TRAY SYSTEMS - CABLE LADDER SYSTEMS” cable ...

Contact Us

For more information, pricing, or custom energy solutions, please contact us:

Website: <https://gdroofing.co.za>

Email: sales@gdroofing.co.za

Phone: +27 72 418 9365

Address: 22 Electron Avenue, Isando, Johannesburg, 1600, South Africa

This document is for informational purposes only. Specifications subject to change without notice.

