

Standard for Level 3 Distribution Boxes in Power Distribution Rooms



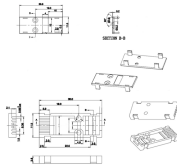
Standard for Level 3 Distribution Boxes in Power Distribution Room



This technical standard outlines requirements for distribution equipment and transformer rooms, including: 1) Room sizes must meet minimum specifications depending on location within or outside ...



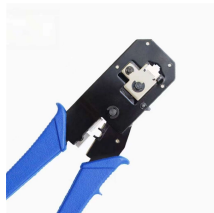
Governed by NEC 110.26, these rules define the minimum Spaces about electrical equipment necessary for workers to perform tasks like inspection, maintenance, and replacement safely.



The design criteria and standards contained within are the minimum requirements acceptable for military installations for efficiency, economy, durability, maintainability, and reliability of electrical power ...



The National Electrical Code (NEC) provides comprehensive safety standards for electrical installations, including requirements for electrical panels (main service panels and subpanels or breaker box).



The main distribution board should be located near the power source. Distribution boards should be placed in areas where electrical equipment or loads are relatively concentrated. The distance ...



It's advisable that the power is supplied at each level from the rising main through a tap off box located at the floor panel. The floor panel should be equipped with both incoming and outgoing ...



This section covers the operation and maintenance of electric power generation, control, transformation, transmission, and distribution lines and equipment. These provisions apply to:



The IEC Standard for Power Distribution Board Design and Layout serves as the global benchmark for ensuring safety, efficiency, and reliability in electrical systems.



The following clearances are specific to a single row of equipment located anywhere in a commercial building, including public spaces such as hallways, corridors and open rooms.



Learn how to install a distribution box safely and correctly. Covers wiring, placement, standards, and expert tips for a compliant setup.

Contact Us

For more information, pricing, or custom energy solutions, please contact us:

Website: <https://gdroofing.co.za>

Email: sales@gdroofing.co.za

Phone: +27 72 418 9365

Address: 22 Electron Avenue, Isando, Johannesburg, 1600, South Africa

This document is for informational purposes only. Specifications subject to change without notice.

