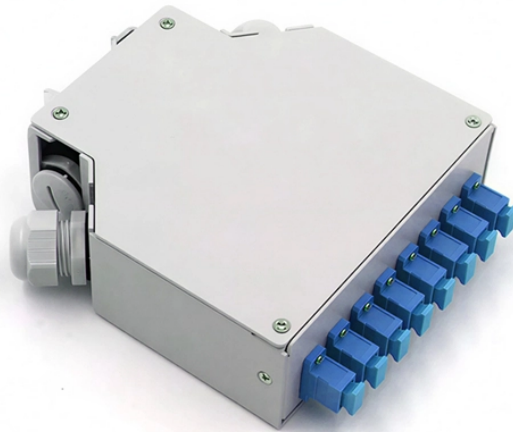




## Standards for Painting Electrical Distribution Box Guardrails


---





## Standards for Painting Electrical Distribution Box Guardrails

 <p>An Extensive Library of Self-Developed Products</p> <p>Optical Distribution Frame, Rack Mount Fiber Patch Panel, Stand Network Cabinet, Fiber Optic Distribution, Fiber Adapters, Optical Cable Patch Panel, Fiber Patch Cord</p>	<p>If an employee receives an electrical shock, shutting down the source of power may be the only safe method to stop the electrical current. The following OSHA standards help ensure that electrical ...</p>
--	--

	<p>Sections 1910.302 through 1910.308 contain design safety standards for electric utilization systems. Included in this category are all electric equipment and installations used to provide electric power ...</p>
---	---

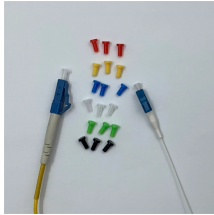
	<p>The standard requires guardrail systems and components to be designed and built to meet the requirements of § 1926.502 (b) (3), (4), and (5). This appendix serves as a non-mandatory guideline ...</p>
--	--

	<p>This document specifies the requirements necessary and background information available for supporting denial of requests from those other than PG&amp; E concerning modification of exterior ...</p>
---	--

	<p>Can you paint a utility box on your property? If yes, what things you will need to consider and pay heed to? Check here for our guide and steps you to follow.</p>
---	---



ICC Digital Codes is the largest provider of model codes, custom codes and standards used worldwide to construct safe, sustainable, affordable and resilient structures.



This standard lists the requirements for safe work practices to protect personnel by reducing exposure to major electrical hazards. It helps companies and employees avoid workplace ...



Discover the rules and safety tips for painting electrical boxes. Learn how to safely enhance your home's aesthetics without compromising safety.



Where steel guardrail components are specified by the Ministry of Forests, Lands and Natural Resource Operations (the ministry) to be painted, this specification document shall apply.

## Contact Us

For more information, pricing, or custom energy solutions, please contact us:

Website: <https://gdroofing.co.za>

Email: [sales@gdroofing.co.za](mailto:sales@gdroofing.co.za)

Phone: +27 72 418 9365

Address: 22 Electron Avenue, Isando, Johannesburg, 1600, South Africa

This document is for informational purposes only. Specifications subject to change without notice.

