

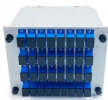
Steps to increase the capacity of a distribution box



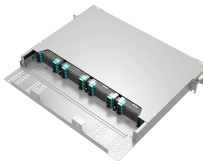
Steps to increase the capacity of a distribution box



Expert advice on how to add more circuit breakers—and electrical circuits—to an already packed electrical panel box. Looks at tandem circuit breakers and how to install them.



Circuit additions are possible if the distribution box has adequate capacity and available spaces. However, you must ensure the total load doesn't exceed the box's rating and that all ...



Box installation: Make sure that Distribution box has been correctly installed and fixed. Material preparation: Prepare the required circuit breakers, wires, wiring ties and other materials, and ...



Learn the step-by-step process of customizing complete distribution boxes tailored to your needs. From requirement confirmation to design, production, and testing, find out how to get a ...



In this guide, I'll walk you through a practical, step-by-step process to size your distribution box based on actual load current. We'll cover everything from understanding your circuits to planning for future ...



This article will detail the practical strategies for optimizing the layout of cable distribution boxes in industrial scenarios, integrating the advantages of Chuanli products and industry best ...



It outlines 4 steps: 1) Pre-installation preparation including reviewing plans and ensuring safety, 2) Mounting panels and running wiring, 3) Installing circuit breakers or fuses, and 4) Terminating ...



Comprehensive guide to designing, calculating loads, building, and ensuring code compliance for your DIY power distribution system.



There are different ways to do this: Put your electrical loads into resistive, inductive, and capacitive groups. Use diversity factors because not all equipment runs at once. Do load studies to get real ...



Find out how to properly wire an electrical panel box with a comprehensive diagram and step-by-step instructions.

Contact Us

For more information, pricing, or custom energy solutions, please contact us:

Website: <https://gdroofing.co.za>

Email: sales@gdroofing.co.za

Phone: +27 72 418 9365

Address: 22 Electron Avenue, Isando, Johannesburg, 1600, South Africa

This document is for informational purposes only. Specifications subject to change without notice.

