

## Stress-Induced Optical Cable Laying



## Stress-Induced Optical Cable Laying



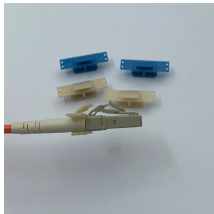
Installation procedures for open placement of fiber optic cables are the same as for electrical cables. Care should be taken to avoid sudden, excessive force so as not to violate tensile load and radius ...



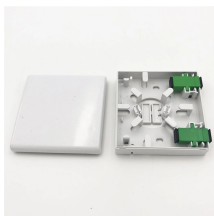
For this type of laying, it is necessary to use a cable track to increase the thrust (used to support the thrust force or energy during the “blowing” of optical fibre cables) with accessories adapted to the ...



Some key considerations for installing optical fiber cable are highlighted below. Failure to follow these guidelines may result in damage or attenuation increases of the optical fiber or cable.



Install stress and long term stress of the glass is limited by standards to ensure the fiber lifetime. “Reliability is expressed as an expected lifetime or as an expected failure rate. The results cannot be ...



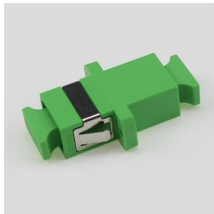
To investigate the stress distribution and its development law of the torsional optical fiber during vortex-induced vibration in the submarine cable, the stress along the torsional optical fiber at ...



The fluid-structure coupling method and finite element simulation are used to analyze the VIV of the 110-kV optical fibre composite submarine cable, and the natural frequency and resonance ...



In this paper, the optimal fiber length in optical ground wire (OPGW) cable during production process is determined.



Learn the top causes of fiber-optic cable damage (mechanical stress, environmental hazards, wildlife, human error) and how to protect your fiber infrastructure from costly outages.



The document describes a job hazard analysis for a fiber optic cable laying task. It lists the potential hazards at each job step such as striking underground utilities ...



Optical fiber experiences various stresses during its lifetime starting from proof-testing, cabling, installation and in-service life.



The study designed three distinct tubing structures of nonmetallic coiled tubing with cable-laying. The cables demonstrate a variable stress distribution throughout all three structures, featuring ...

## Contact Us

For more information, pricing, or custom energy solutions, please contact us:

Website: <https://gdroofing.co.za>

Email: [sales@gdroofing.co.za](mailto:sales@gdroofing.co.za)

Phone: +27 72 418 9365

Address: 22 Electron Avenue, Isando, Johannesburg, 1600, South Africa

This document is for informational purposes only. Specifications subject to change without notice.

