

Switch Architecture and Passive Optical Networks



Switch Architecture and Passive Optical Networks



Unlike active networks, which use components like electronic routers, switches, or regenerators, a passive network maintains signal integrity and distribution through fixed, non-powered infrastructure.



Passive optical network (PON) is continuously explored for new architectures and effective DSP techniques to adapt to the next generation communication. In this paper, we summarize our work ...



We demonstrate that the Passive Optical architecture is vastly superior to traditional copper cable-based LANs in terms of deployment flexibility, ease of management, environment friendliness, capital and ...



Understanding the key differences between AON and PON is crucial for network architects, service providers, and businesses investing in future-proof ...



PON architecture, or Passive Optical Network architecture, is defined as a passive optical network deployed in a point-to-multipoint configuration that utilizes a single fiber from the central office, which ...



PON is short for Passive Optical Network, a mainstream fixed-line access technology that enables simultaneous access for multiple users over a single optical fiber.



What Should You Look for in a Passive Optical LAN Solution? The beauty of the passive optical LAN architecture is how proven the technology is – with its roots in fibre to the home (FTTH), it offers true ...



Describes the critical components used in PONs and discusses network architectures to consider in an effective PON deployment.



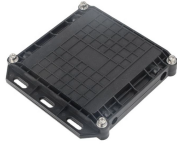
To overcome the bandwidth limitation and multi-tier architecture of electrically switched networks, optical switching techniques have been proposed and investigated to replace the current electrical switches.



Comprehensive guide to Passive Optical Network (PON) technology, covering GPON, EPON, XGS-PON, NG-PON2, and future 50G/100G standards. Learn PON architecture, ...



In this one-to-many topology, a single fiber serving many sites branches into multiple fibers through a passive splitter, and those fibers can each serve multiple sites through further splitters.



PON is short for Passive Optical Network, a mainstream fixed-line access technology that enables simultaneous access for multiple users over a single optical fiber.



A passive optical network (PON) is a point-to-multipoint network architecture that is now being implemented to provide a fiber-to-the-desktop solution in which unpowered (hence passive) optical ...

Contact Us

For more information, pricing, or custom energy solutions, please contact us:

Website: <https://gdroofing.co.za>

Email: sales@gdroofing.co.za

Phone: +27 72 418 9365

Address: 22 Electron Avenue, Isando, Johannesburg, 1600, South Africa

This document is for informational purposes only. Specifications subject to change without notice.

