

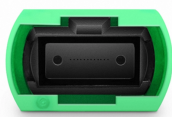
TP-Link Fiber Optic Transceiver 20km Single Mode



TP-Link Fiber Optic Transceiver 20km Single Mode



This TP-LINK® TL-SM321B compatible SFP transceiver provides 1000Base-BX throughput up to 20km over single-mode fiber (SMF) using a wavelength of 1310nmTx/1550nmRx via an LC connector.



Discover high-performance single mode SFP modules for your network. Compatible with major brands like Cisco, Ubiquiti, and more.



The MC210CS is a media converter designed to convert 1000BASE-LX fiber to 1000Base-T copper media or vice versa. Designed under IEEE802.3ab 1000Base-T and IEEE802.3z 1000Base-LX ...



Equipped with 1 SC fiber connector and 4 Gigabit Ethernet ports, this transceiver supports stable data transmission up to 20 kilometers. This transceiver is engineered for efficient fiber optic ...



The TP-Link MC210CS is a media converter designed to convert 1000BASE-LX fiber to 1000Base-T copper media or vice versa. Designed under IEEE802.3ab 1000Base-T and IEEE802.3z 1000Base ...



TP-Link SM311LS single-mode SFP transceiver for 20 km backbone links. 1.25 Gbps, LC duplex, DDM monitoring, passive power. Security and campus networks.



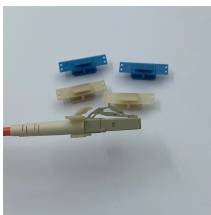
TP-LINK's ISM321A-20 adopts the latest standard 1000Base-BX, transmission over a single strand of fiber, with one different wavelength going in each direction. You can extend the network distance up ...



TP-LINK's TL-SM321B is designed to work with TL-SM321A* in pair to create an on-site fiber communication up to 20km. Transmitting over one single-mode fiber with one different wavelength ...



The TL-SM312LS-20KM Fiber Media Converter 20KM by TP-Link is a Single-Mode Converter designed for long-distance industrial network connectivity. It features one RJ45 port (10/100/1000Mbps auto ...



TL-MC101 is a media converter designed to convert 1000BASE-LX fiber to 1000Base-T copper media or vice versa. Designed under IEEE802.3ab 1000Base-T and IEEE802.3z 1000Base-LX standards, TL ...

Contact Us

For more information, pricing, or custom energy solutions, please contact us:

Website: <https://gdroofing.co.za>

Email: sales@gdroofing.co.za

Phone: +27 72 418 9365

Address: 22 Electron Avenue, Isando, Johannesburg, 1600, South Africa

This document is for informational purposes only. Specifications subject to change without notice.

