

Telecom Terminal Box Disassembly



Overview

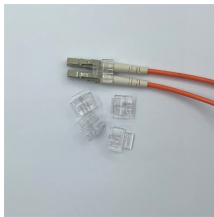
To remove old phone and cable lines, follow these steps: Call the utilities and request removal. Determine which company owns the lines. The modules occupy three (3) vertical inches and span half the width of an On-Q Service Center Enclosure. Description terminal for optional surge protection (On-Q P/N 363487-01). The. A telephone circuit box, or junction box, refers to the hub that distributes the power and signals to other telephone lines running to various telephone jacks inside your home after receiving the main telephone line running from the network interface device (NID) located just outside your home. A. Are you trying to replace the box or wiring going to a building?

Source: There is one on a pole at the bottom of my street and BT own that and maintain it This. It has got a BT logo on it, albeit an old one. Obviously the boxes look rather dated and unsightly and I don't need a 1 metre length of wire before the. We've got you covered with this guide on how to wire a telephone junction box. It houses the cables that run. Cable Terminator Tool LTI-7 GTT-7 For TV CATV Box <https://a>. The box has been there since we moved in a few years ago.

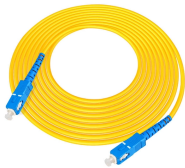
Telecom Terminal Box Disassembly



Find out how to wire a home telephone junction box and ensure a reliable phone connection in your house. Learn about the different wires and colors used in ...



Your best option might be a flush box with a rear entry, in place of the junction box. The current faceplate could be reused.



A telephone junction box can become old and corroded to the point that it needs to be replaced to disruption of service. Replacing the box involves a simple process of unhooking the wires, then ...



Do you happen to know what that attachment might be? The "attachment" is a release mechanism that retracts the locking pin at the end of the tool. It has to be retracted to be inserted into ...



Wiring a telephone junction box can seem daunting, but with the right knowledge and equipment, it's actually quite simple. With this guide and the included wiring diagram, you can get ...



To disconnect your telephone lines, start by locating the network interface device (NID) on the exterior wall of your home. Open the NID and find the telephone jack for the line you wish to ...



Find out how to wire a home telephone junction box and ensure a reliable phone connection in your house. Learn about the different wires and colors used in telephone wiring and how to properly ...



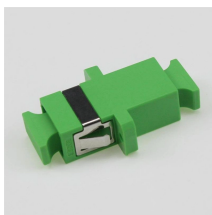
Ambient Temperature: -40°C to +60°C for the terminal box and the cable gland with elastomeric sealing rings.



Introduction The On-Q/Legrand 1x6 Basic Telecom (P/N 1267062-01) and 6 Port Telecom Expansion Module (P/N 1267058-01) provide a structured method for distributing telephone service throughout ...



We've got an old junction box for our phones where I work () and I need to take it apart to identify the wires. I can get the front rockers off that can be seen in the pictures.



Understanding telephone line box wiring is essential for anyone who needs to install, repair, or maintain a telephone system. By familiarizing yourself with the components and color-coding scheme, you can ...

Contact Us

For more information, pricing, or custom energy solutions, please contact us:

Website: <https://gdroofing.co.za>

Email: sales@gdroofing.co.za

Phone: +27 72 418 9365

Address: 22 Electron Avenue, Isando, Johannesburg, 1600, South Africa

This document is for informational purposes only. Specifications subject to change without notice.

