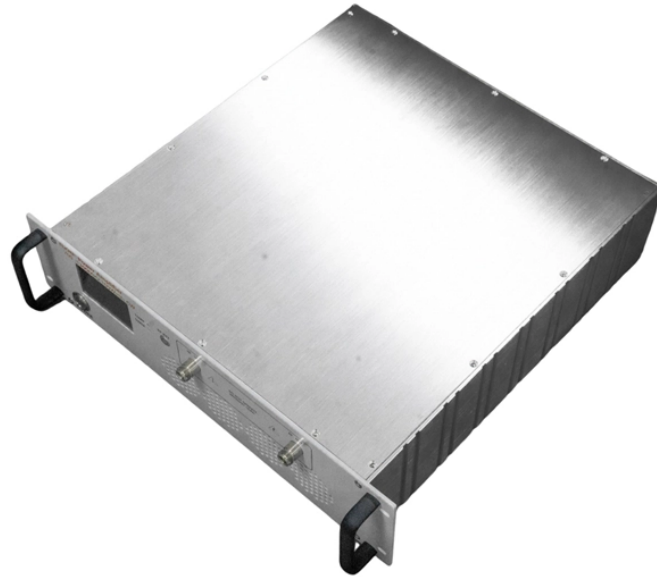


GDR Telecom Site Energy Systems

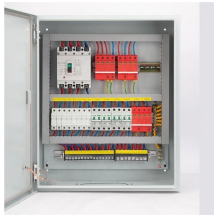
The distribution box has a reserved capacity of 28kW



The distribution box has a reserved capacity of 28kW



The main objective of a modern modern power distribution system is to provide quality and uninterrupted power supply to the building so that there is no disruption to the productive ...



Understand distribution boxes (DB boxes) in 5 minutes. Learn about types, components, functions, and uses. Find the perfect DB box for your needs.



Proper box fill calculation is crucial for electrical safety and code compliance. Our Box Fill Calculator helps you determine if your electrical box has sufficient capacity for all conductors and devices.



Summary: Residential Electrical Load Calculator, Online and Interactive provides accurate main service panel load calculations. No explanation needed. Short Explanations to help ...



Calculate electrical box fill capacity according to NEC requirements to ensure code compliance and safe installation.



Submittals Addendum Wiring Diagrams for
Condensing Units of 28 kW and 35 kW Vertiv™
Coolphase Condensing Unit Submittals Addendum
The information contained in this document is
subject to ...



To this end, electrical equip- ment such as
distribution boards and transformers is selected
and rated in such a way that an optimum result as
a whole is achieved rather than focusing on
individual ...



It discusses concepts like maximum demand, load
factors, diversity factors, reserve capacity, and
daily load curves. The document aims to provide
engineering students with examples to calculate
values ...



Use this box fill calculator to find the correct size
of electrical utility box to fit the conducting wires,
grounding wires, and devices or equipment you
would need to install and have it pass the National
...



If the alternate power supply doesn't have
adequate capacity to carry the entire load, it must
have automatic selective load pickup and load
shedding to ensure adequate power in the
following order ...

Contact Us

For more information, pricing, or custom energy solutions, please contact us:

Website: <https://gdroofing.co.za>

Email: sales@gdroofing.co.za

Phone: +27 72 418 9365

Address: 22 Electron Avenue, Isando, Johannesburg, 1600, South Africa

This document is for informational purposes only. Specifications subject to change without notice.

