

The optical module is unable to transmit data normally



Overview

If the optical module is faulty, replace it with the spare part. Customers in the use of optical modules will more or less encounter a variety of failure problems, such as optical module model selection is correct, the use of jumper is correct and some common problems, customers have the ability to judge and have a clear solution, but for some of the use of. This paper introduces the common failure causes of abnormal transmit/receive optical power of optical modules and proposes countermeasures to help users quickly locate or solve network failures. SFP Detail Diagnostics Information (internal calibration) Current Alarms Warnings Measurement High Low. Check the model of the faulty optical module. These compact devices convert electrical signals to optical signals and vice versa, enabling data transmission over fiber optic cables. Have you ever experienced an unexpected network outage due to the failure of an SFP/SFP+ optical transceiver?

Network outages can bring your ability to communicate and work to a halt, and your IT team will likely be frantically looking for a solution.

The optical module is unable to transmit data normally



This case study demonstrates a direct relationship between optical transceiver failure and degradation of network performance, while the previous table of data provides the distinguished ...



However, like any other electronic component, optical transceivers can encounter issues that may affect network performance. In this guide, we'll delve ...



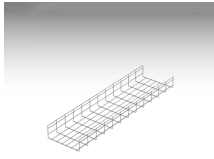
Explore the essential principles and types of optical modules for fiber optic communication systems.



Solution: Check whether the working parameters, interface information and receiving and sending of the optical module are normal, and then check the optical fiber jumper, or try to replace ...



If the optical module is faulty, replace it with the spare part. If the fault is caused by the configuration or environment, advise the customer to optimize the configuration or environment.



Grid Cable for
marine and offshore
applications

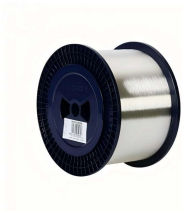
Learn how to troubleshoot common SFP module issues including physical faults, hardware damage, compatibility, and configuration errors. This guide provides step-by-step solutions to maintain ...



However, like any other electronic component, optical transceivers can encounter issues that may affect network performance. In this guide, we'll delve into common optical transceiver ...



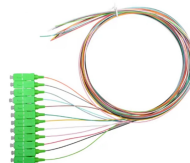
Engineer-friendly guide to using DDM/DOM readings to diagnose optical transceiver issues. Understand TX/RX power, bias current, voltage, temperature, failure ...



In this article, we will focus on teaching you how to troubleshoot and solve the common three categories of optical module failure. First, the transmission class of the optical module fault ...



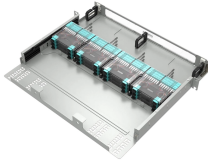
When the transmit optical power exceeds the nominal working range, it may cause the optical module to work abnormally, thus affecting the network data transmission, and users can carry out preliminary ...



Explore the essential principles and types of optical modules for fiber optic communication systems.



These compact devices convert electrical signals to optical signals and vice versa, enabling data transmission over fiber optic cables. While generally reliable, failures do occur, leading ...



Engineer-friendly guide to using DDM/DOM readings to diagnose optical transceiver issues. Understand TX/RX power, bias current, voltage, temperature, failure patterns, and practical troubleshooting steps.

Contact Us

For more information, pricing, or custom energy solutions, please contact us:

Website: <https://gdroofing.co.za>

Email: sales@gdroofing.co.za

Phone: +27 72 418 9365

Address: 22 Electron Avenue, Isando, Johannesburg, 1600, South Africa

This document is for informational purposes only. Specifications subject to change without notice.

