

## Tonga power distribution box construction



## Tonga power distribution box construction



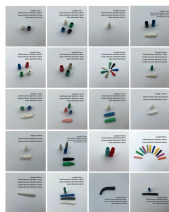
Tonga Power MV/LV ABC - the outcome Network reliability and resilience: • Significant reduction of network faults caused by storms vegetation, and improved power supply to critical customers and • ...



Tonga Power Limited (TPL) is pleased to announce a strategic collaboration with Northpower, a leading electricity network distribution company based in New Zealand, aimed at ...



Power distribution assets typically represent 20%-30% of the required power system investments in electricity industries worldwide. However, for Tonga, these represent about 42%. The standard ...



2019 - 2021: BESS construction and commissioning "Power" BESS acting disproportionately, causing instability. One of Entura's first grid-forming BESS specifications. The supplier's power system ...



We aim to provide the people of Tonga with a safe, reliable, efficient and reliable network infrastructure do deliver power to all islands in the Kingdom of Tonga. We currently have completed and ongoing ...



We generate, distribute and sell electricity to more than 25,000 plus customers in the Kingdom of Tonga, including the outer islands of "Eua, Ha"apai & Vava"u.



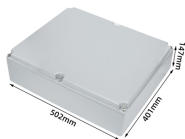
Please be advised that disconnection for April 2026 power bill arrears is currently ongoing. Disconnection for May 2026 arrears will commence and is scheduled to begin on Friday, 15th May ...



The XL type low-voltage power distribution cabinet uses domestically designed new components. The enclosure is made of bent steel plates, featuring a compact structure, easy maintenance, and flexible ...



The Nuku"alofa Network Upgrade Project aims to improve climate resilience (particularly cyclone resilience), reduce network losses, and improve the safety and reliability of the electricity distribution ...



The underground box transformer occupies a small area and can replace traditional distribution rooms in residential communities, reducing the construction of distribution rooms and providing significant ...



The standard losses in rural power distribution networks are about 5.0%, yet the losses are about 10.5% in Tonga. Greater losses mean an increased requirement for power generation, which makes ...



In these circumstances, Tonga's electricity sector needs to adopt renewable energy sources further and at the same time stably supply electricity and minimize the fluctuation in frequencies of the grid ...

## Contact Us

For more information, pricing, or custom energy solutions, please contact us:

Website: <https://gdroofing.co.za>

Email: [sales@gdroofing.co.za](mailto:sales@gdroofing.co.za)

Phone: +27 72 418 9365

Address: 22 Electron Avenue, Isando, Johannesburg, 1600, South Africa

This document is for informational purposes only. Specifications subject to change without notice.

