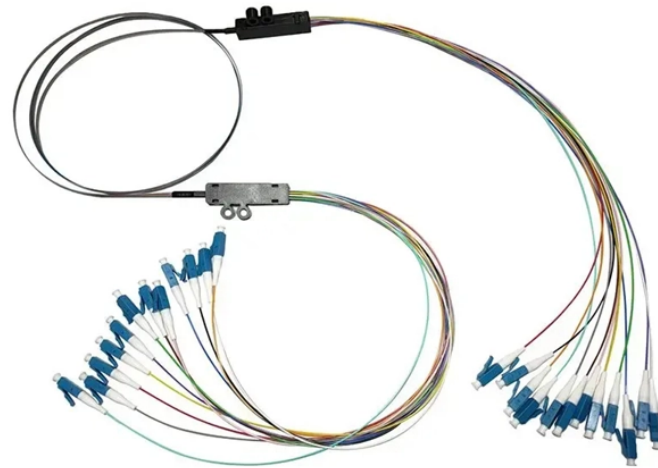


# **Transformer Distribution Box Configuration**



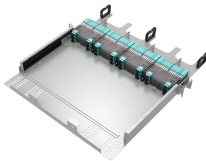
## Transformer Distribution Box Configuration



The transformer box, the bracket, the foundation steel, and the shell of the dry-type transformer shall be reliably connected to the protective conductor separately, and the fasteners and ...



It shall be noted that any reference within this manual to "oil" or "fluid" will be equally applicable to transformer mineral oil to BSEN60296 and synthetic organic Ester eg "Midel 7131" complying with ...



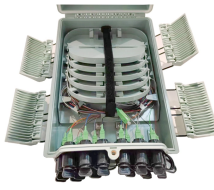
Distribution transformer: Installation, commissioning, operation and maintenance hints



By integrating the secondary molded case circuit breaker into the low-voltage dry-type distribution transformer package, arc flash incident energy values for secondary panels can be ...



An examination of the properties, applications, and significance of distribution transformers within the context of the power distribution system is presented in this section.



The indicative values of power that can be connected on the different voltage levels of the distribution networks are specified by the standard in the following table.



Distribution transformer: Installation, commissioning, operation and ...



This guide comprehensively covers various aspects of distribution transformers. It delves into the construction elements, including the core, windings, cooling system, tank and cover, conservator, ...



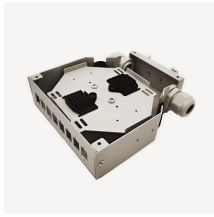
- For surface-mounted distribution boxes on the wall, the indoor ceiling, wall, and decoration should be completed before installation; for flush-mounted control (distribution) boxes, the...



Distribution transformers convert the high voltages that economically distribute power, into the lower voltages required by customers. Distribution transformers are installed overhead on poles, at grade ...



In this guide, we'll demystify the language of transformer schematics, break down their core elements, and explore how to leverage them across every phase of a transformer's lifecycle—from blueprint to ...



This guide comprehensively covers various aspects of distribution transformers. It delves into the construction elements, including the core, windings, cooling ...

## Contact Us

For more information, pricing, or custom energy solutions, please contact us:

Website: <https://gdroofing.co.za>

Email: [sales@gdroofing.co.za](mailto:sales@gdroofing.co.za)

Phone: +27 72 418 9365

Address: 22 Electron Avenue, Isando, Johannesburg, 1600, South Africa

This document is for informational purposes only. Specifications subject to change without notice.

