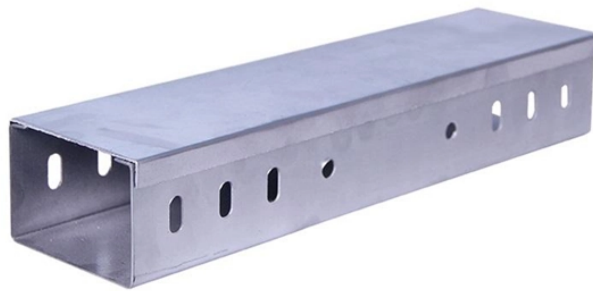


# **Turkmenistan Consulting QSFP Optical Module LPO**



## Turkmenistan Consulting QSFP Optical Module LPO



Customers have often singled out link accountability as a key impediment to adoption of LPO, and for good reasons



Our optical modules feature traditional DPO, low-power LRO, LPO, and Active Loopback designs for testing, and support data rates from 10G up to 1.6T across a wide range of package types.



Swappable optical modules for flexible connectivity. Great for scalable network design. Low power LPO available. Shorter-reach high-speed links with built-in signal conditioning. Cost-effective options for ...



Comparison to CPO of the need for a standalone module. Although CPO is becoming increasingly popular, LPO is seen as a natural evolutionary path for pluggables, offering lower risk compared to ...



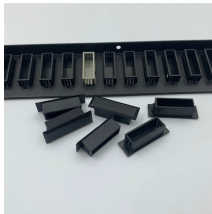
Linktel's LPO portfolio consists of both QSFP-DD and OSFP modules. Linktel Technologies provides high-quality and cutting-edge products and solutions for high speed optical I/O connectivity, including ...



Amphenol's QSFP-DD Linear Pluggable Optical (LPO) Transceiver delivers low-latency, high-bandwidth PCIe<sup>®</sup> Gen 5.0 over optical link, enabling scalable server disaggregation and ...



QSFP-DD800 supporting dense 400 GbE (aka breakout) Both 400G & 800G form factor enables an economical way to implement breakout to lower speed Ethernet interfaces.



Our LPO transceivers support 400G and 800G applications in QSFP and OSFP form factors. They bring all the efficiency and performance benefits of LPO to data center operators, while integrating ...



The focus of the LPO MSA is to specify module and network equipment level interoperability requirements that span both electrical and optical technologies. Starting at 100 Gb/s per lane, the ...

## Contact Us

For more information, pricing, or custom energy solutions, please contact us:

Website: <https://gdroofing.co.za>

Email: [sales@gdroofing.co.za](mailto:sales@gdroofing.co.za)

Phone: +27 72 418 9365

Address: 22 Electron Avenue, Isando, Johannesburg, 1600, South Africa

This document is for informational purposes only. Specifications subject to change without notice.

