

## GDR Telecom Site Energy Systems

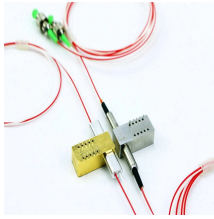
# Two 1-to-8 beam splitters



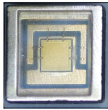
## Two 1-to-8 beam splitters



The SPIE Digital Library offers a wide range of resources on beam splitters, focusing on their design, applications, and performance across various optical systems.



A beam splitter (or beamsplitter, power splitter) is an optical device which can split an incident light beam (e.g. a laser beam) into two (or sometimes more) beams, which may or may not have the same ...



Beam splitters are sometimes used to recombine beams of light, as in a Mach-Zehnder interferometer. In this case there are two incoming beams, and potentially two outgoing beams.



Keysight's standard beamsplitters separate an input beam into two or more output beams based on polarization, amplitude, or wavelength. Standard products are available at laser wavelengths from ...



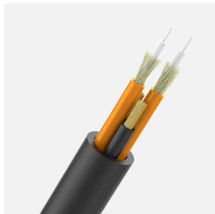
Beamsplitters are optical components used to split input light into two separate parts. Beamsplitters are common components in laser or illumination systems. Beamsplitters are also ideal for fluorescence ...



Explore our collection of optical cable splitters and PON splitters for sale. Optical beam splitters are used to split the fiber optic light evenly into several parts at specific ratios.



There are two main types of beamsplitters, plate beamsplitter and cube beamsplitter and each has their own advantages. Some industries that use beamsplitters are interferometry, bio-medical, metrology, ...



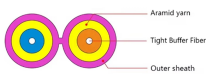
Our selection includes plate and cube designs, offering polarizing, non-polarizing, and dichroic options. All our custom beam splitters are made from premium glass, ensuring superior surface quality and ...



The main goal of this paper is to design and optimize  $1 \times 2$ ,  $1 \times 4$  and  $1 \times 8$  Y beam splitters based on a two-dimensional (2-D) photonic crystal operating in the infrared light region of ...



Our selection includes plate and cube designs, offering polarizing, non-polarizing, and dichroic options. All our custom beam splitters are made from premium glass, ...



Thorlabs offers a wide range of optical beamsplitters. Our plate beamsplitters have a coated front surface that determines the beam splitting ratio while the back surface is wedged and AR coated in ...

## Contact Us

For more information, pricing, or custom energy solutions, please contact us:

Website: <https://gdroofing.co.za>

Email: [sales@gdroofing.co.za](mailto:sales@gdroofing.co.za)

Phone: +27 72 418 9365

Address: 22 Electron Avenue, Isando, Johannesburg, 1600, South Africa

This document is for informational purposes only. Specifications subject to change without notice.

