

# **UPS Power Supply Automatic Testing System**



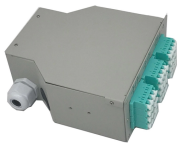
## UPS Power Supply Automatic Testing System



We provide testing and certification services for Uninterruptible Power Supply (UPS) Systems in accordance with UL 1778, the Standard for Uninterruptible Power Systems, along with other ...



The uninterrupted power supply testing (UPS Testing) shall be performed after completion of assembly in the manufacturing shop.



Comprehensive UPS testing is completed before leaving our facilities. In addition to a factory test report, we offer load bank testing, UPS battery testing, and more.



Battery and UPS Maintenance Checklist for Manufacturing Facilities Comprehensive inspection protocol for uninterruptible power systems covering battery capacity verification, terminal ...



ATE refers to an integrated computer-controlled system, comprising specialized measurement hardware and software, designed to perform comprehensive, rapid, and consistent validation of all key ...



This article aims to comprehensively present the stages, processes, and methods employed in the design and assembly of an industrial testing automation system u



We provide testing and certification services for Uninterruptible Power Supply (UPS) Systems in accordance with UL 1778, the Standard for Uninterruptible Power ...



Start your sales inquiry online and an expert will connect with you. Easily find the nearest Schneider Electric distributor in your location. Find support resources for all your needs, in one place.



Autotest offers the most reliable, customizable and programmable UPS testing capability in the industry. Our comprehensive suite of testing equipment and software enables you to validate the performance ...



During Uninterruptible Power Supply testing of this type, the UPS should automatically switch to battery power without interruption. This test checks the system's ability to provide power instantly in the ...



UPS testing and evaluation ensures that the UPS system is working properly and will protect important equipment during a power outage. UPS testing should be done annually to identify ...

## Contact Us

For more information, pricing, or custom energy solutions, please contact us:

Website: <https://gdroofing.co.za>

Email: [sales@gdroofing.co.za](mailto:sales@gdroofing.co.za)

Phone: +27 72 418 9365

Address: 22 Electron Avenue, Isando, Johannesburg, 1600, South Africa

This document is for informational purposes only. Specifications subject to change without notice.

