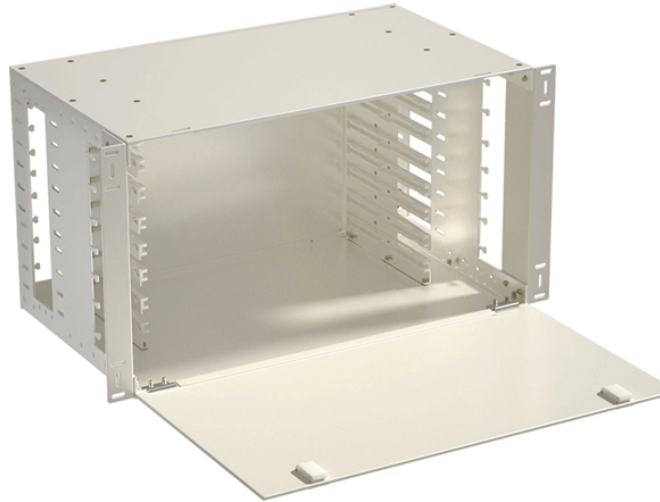


## Unblock IPs of Core Switches



## Unblock IPs of Core Switches



You can also specify both subnets and IP addresses in the same command. For example, unblock connections from subnet 203.0.113.0/255.255.255.0 and IP address 198.51.100.10.



All devices and the receiver are on the same VLAN. 10.10.100.231 is out there off one of the switches but I don't know how to find the device with that IP. If I could find the device I could ...



You can apply a custom group policy to the device and bypass each security/filtering component individually to narrow down which one is blocking the resource. For example, with the ...



When ports on a switch have been isolated, the MS will not send from one isolated port to another. This can be useful in a multi-tenant environment, for example, where clients should be unable to send ...



A comprehensive switch troubleshooting from the physical layer to the data link layer to the network layer to find out why your network switch is not working.



Focus on areas with third-party switches or devices that make their own mesh networks, like Sonos, as they often have misconfigurations leading to loops. Once a loop is detected, it needs immediate ...



When configuring interfaces and routes, you need to specify a VPN instance to isolate public network routes from the return routes from the firewalls destined for the egress routers through ...



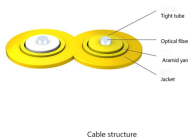
After configuring the switch's IP parameters, the CLI can be accessed using Telnet or SSH from any computer attached to the network. The switch can also be managed by any computer using a ...



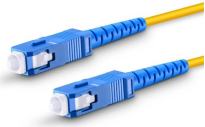
Go to the Cisco website and download any utilities that manage, or locate the devices. Unless set up when set in place, most switches do not have a management IP anymore once ...



I assume you mean that you configured DHCP server scopes for all the VLANs on the core switch. Since you are getting the address via SW1 but not SW2 we know that the DHCP-server ...



This is because the switch does not know that the connected device is a PC; the switch only knows that the port has changed the state. In order to resolve this issue, Cisco has developed ...



You can configure the switch to obtain an address from a DHCP server, or manually configure a static IP address. Valid IP addresses consist of four decimal numbers, 0 to 255, separated by periods.

## Contact Us

For more information, pricing, or custom energy solutions, please contact us:

Website: <https://gdroofing.co.za>

Email: [sales@gdroofing.co.za](mailto:sales@gdroofing.co.za)

Phone: +27 72 418 9365

Address: 22 Electron Avenue, Isando, Johannesburg, 1600, South Africa

This document is for informational purposes only. Specifications subject to change without notice.

