

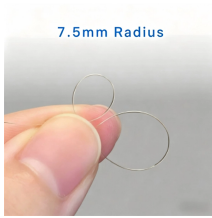
# Upgraded version of vehicle-mounted fiber optic ODF patch panel warranty



## Overview

We offer different models that can accommodate 12 core fiber, 24 core fiber, 36 core fiber, 48 core fiber, 72 core fiber, 96 core fiber, and 144 core fiber applications. Belden offers several Fiber Patching Systems. Full patching platforms include FX ECX for LAN environments, FX UHD for high-density fiber channels and the DCX System used primarily in data centers where high amounts of fiber connections and density are the key requirements, as in optical. UHDX ultra high-density fiber patch panels patch up to 144 LC fibers per RU to provide an inter-connect or cross-connect between backbone horizontal cable and active equipment while minimizing rack space in a frame or cabinet. HDX panels offer manageable density of up to 96 LC fibers per RU with. Consolidate your fiber optic connections in industrial environments with our DIN rail patch panel, with a modular design and tool-free installation save space and simplify deployment. When configured as full-scale rack systems, these are often called Optical Distribution Frames (ODFs). Durable, flexible, and built for reliable fiber management.

## Upgraded version of vehicle-mounted fiber optic ODF patch panel w



View our full range of Fiber Optic Patch Panels to browse available configurations, including Rack Mount, Wall Mount, and High-Density ODF solutions.



Streamline your fiber connectivity with our premium Fiber Optic Patch Panels and ODF systems. Designed for reliability and ease of use, our rack-mount and wall-mount solutions provide the perfect ...



Shipping fee and delivery date to be negotiated. Chat with supplier now for more details.



These high-density fiber patch panels allow a mix-and-match of e2XHD fiber and copper snap-in cassettes - up to 96 LC fibers or 48 copper ports per RU. Cassettes quickly snap in and pull out of ...



We offer different models that can accommodate 12 core fiber, 24 core fiber, 36 core fiber, 48 core fiber, 72 core fiber, 96 core fiber, and 144 core fiber applications. Our patch panels can be equipped with ...



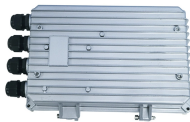
Foss FP-series front patch panels are made with the highest accuracy for precise fitting. All panels are tested according to both our own quality measures and international standards before they are sent ...



During this free webinar, we will discuss different fiber cables types, appropriate applications for each type, the mechanics of performing a Tier I test on fiber optic cable and calculating a loss limit for ...



The range of FO patch panels and ODF are the most in-demand on the SCS market. The company offers these solutions. This section details product specifications. If you have any questions, please ...



Reserve space for future fiber optic needs with our blank fiber adapter panel. This panel snaps in for easy expansion and compliance with TIA/EIA-568-C.3 standards.



Discover ODF patch panels and fiber cable reel systems for UAV, tactical, and data center use. Durable, flexible, and built for reliable fiber management.

## Contact Us

For more information, pricing, or custom energy solutions, please contact us:

Website: <https://gdroofing.co.za>

Email: [sales@gdroofing.co.za](mailto:sales@gdroofing.co.za)

Phone: +27 72 418 9365

Address: 22 Electron Avenue, Isando, Johannesburg, 1600, South Africa

This document is for informational purposes only. Specifications subject to change without notice.

