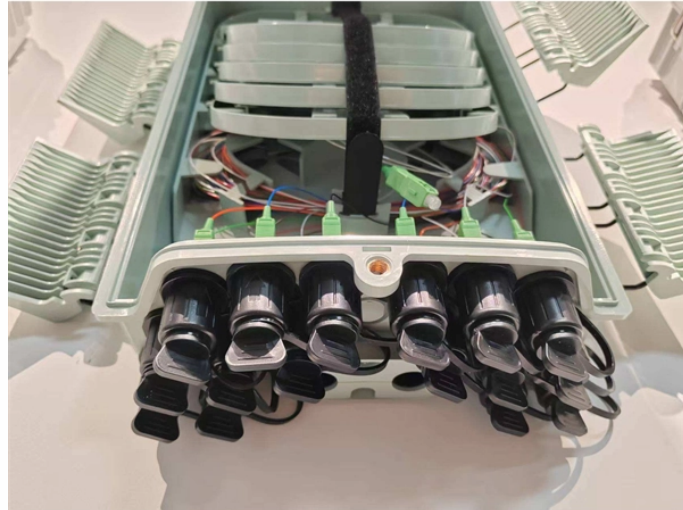
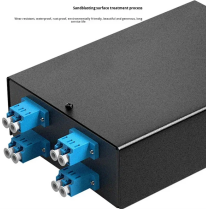


## GDR Telecom Site Energy Systems

# Use 100Mbps access switch



## Use 100Mbps access switch



Use a high-quality Ethernet cable rated for Gigabit speeds. Older or lower-quality cables may not support higher speeds. Switch Port: Try connecting your AP to a different port on your switch. This ...



I just got a new EAP225-Outdoor and connected it to a gigabit Ethernet switch using the included PoE adaptor. On the EAP status page, it says the LAN port is "100Mbps - FD", and I ...



Aside from the obvious of 100mbit is pretty paltry by today's standards, they're also probably power hungry, noisy, hot and getting firmware updates/fixes for old switches is often a giant pain in the ass, ...



All of these devices support gigabit, however the access point says it's only connected at 100Mbps FD and the light on my switch is yellow meaning it is only at 100Mbps.



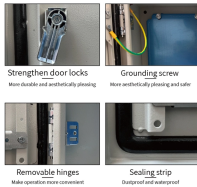
When I'm using my docking station (uses Realtek USB GbE Family Controller) from my laptop I'm only getting 100mbps from the switch, even when I selected 1Gbps full duplex.



If you can disconnect the AP from the wall, I'd carry it over to the switch and plug it into a different port with a new patch cable. If that works, you've isolated the issue to the cabling.



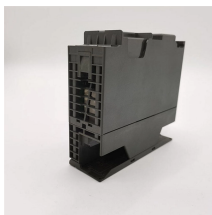
Experiencing slow network speeds on your Gigabit switch? Discover why your gigabit connection isn't getting Gigabit speeds and learn how to resolve them.



If the port is at fault, you'll get only 100 Mbps on it no matter what the cable length is and what's connected on the other end. If other ports give you only 100 Mbps with this cable, then the ...



The junior network engineer tasked with trying to find out why some of our WAPs are running at 100 Mbps instead of 1 Gbps is blaming the team member who replaces our cables.



Wondering if a gigabit switch works with a 100Mbps network cable? Learn the differences between Cat5E and Cat6 cables, how they affect your network speed, and when to choose the right cable for ...

## Contact Us

For more information, pricing, or custom energy solutions, please contact us:

Website: <https://gdroofing.co.za>

Email: [sales@gdroofing.co.za](mailto:sales@gdroofing.co.za)

Phone: +27 72 418 9365

Address: 22 Electron Avenue, Isando, Johannesburg, 1600, South Africa

This document is for informational purposes only. Specifications subject to change without notice.

