

GDR Telecom Site Energy Systems

VIP45 Relay Protection



VIP45 Relay Protection



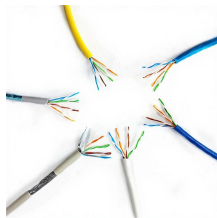
VIP 45 is powered by their current sensor and operate without an auxiliary power supply. The VIP 45 can be used for protection against phase faults and earth faults. VIP 45 displays current ...



a VIP 40, 45, 400 or 410 protection relays, integrated in an optimised functional block to form a protection system dedicated to the application Simple protection, easy to implement High sensitivity ...



Find many great new & used options and get the best deals for VIP45 REL59913 200A PROTECTION RELAY . NEW IN BOX . DHL at the best online prices at eBay! Free shipping for ...



\$ 672.84 REL59913 ELECTRICAL PROTECTION RELAY VIP45 200A quantity Add to cart Description We are pleased to offer REL59913 ELECTRICAL PROTECTION RELAY VIP45 200A Product Detail: ...



VIP45 protection relays are designed for the protection and operation of MV/LV utility substations up to 200 A primary belonging to electrical distribution networks in industrial installations.



Manual intended for personnel responsible for installing, commissioning and using VIP protection 40 or VIP 45.



VIP40 and VIP45 are protection relays with a self-powered supply. They are powered by their current sensor and operate without an auxiliary power supply.



This power supply supplies the power required by the VIP to perform its protection functions without having recourse to any other external power source. The power required comes from the specific ...



Selection guide for Schneider Electric VIP 40/45 and 400/410 medium voltage protection relays. Features, applications, and specs included.



The document is a user manual for VIP40 and VIP45 protection relays, detailing their installation, operation, and maintenance. It emphasizes safety precautions, technical characteristics, and the ...

Contact Us

For more information, pricing, or custom energy solutions, please contact us:

Website: <https://gdroofing.co.za>

Email: sales@gdroofing.co.za

Phone: +27 72 418 9365

Address: 22 Electron Avenue, Isando, Johannesburg, 1600, South Africa

This document is for informational purposes only. Specifications subject to change without notice.

