




## Vanuatu Earthquake-resistant Cable Trays





## Vanuatu Earthquake-resistant Cable Trays

	<p>The seismic performance levels of cable tray systems are presented according to current seismic design codes. A performance-based optimum seismic design procedure for cable tray ...</p>
---	--

	<p>The installation process of the dustproof cable tray according to the present invention will be described below. First, a pair of unit trays 10 are arranged at regular intervals in the...</p>
---	--

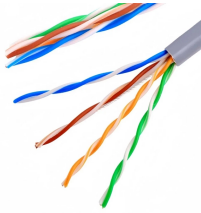
	<p>Our team of experts can help you select the best cable tray series for your application, as well as designing your seismic bracing layout to ensure it meets applicable building codes and standards.</p>
--	--

	<p>Cable trays are systems used for the safe transportation and protection of electrical cables, designed to fit the pathways within buildings and structural installations.</p>
---	--

	<p>The present invention relates to an earthquake-resistant cable tray and a duct, and more particularly, to a cable supporting structure for a cable bus and a bus duct, wire cable trays...</p>
---	---



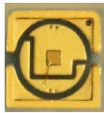
We offer a pre-engineered, time-saving solution which braces and secures non-structural equipment within a building to minimize damage from earthquakes or seismic events.



As with cable restraints, floor- or roof-mounted electrical distribution support systems will normally involve a box frame that supports the system (single or multiple runs) with some kind of a trapeze bar.



The assembly connects the structure such as a beam or ceiling, to a brace member which could be cable, channel, or pipe to a non-structural support, such as pipe, trapeze, cable tray, duct, and more.



As one of the noteworthy Cable Tray Exporters and Suppliers in Vanuatu, we are right here to serve you as promised. Give our experts a call or drop your enquiry to know more.



This article discusses the importance of seismic resistance for cable trays, detailing when seismic braces are necessary, the factors that affect seismic resistance, and how to ensure your ...

## Contact Us

For more information, pricing, or custom energy solutions, please contact us:

Website: <https://gdroofing.co.za>

Email: [sales@gdroofing.co.za](mailto:sales@gdroofing.co.za)

Phone: +27 72 418 9365

Address: 22 Electron Avenue, Isando, Johannesburg, 1600, South Africa

This document is for informational purposes only. Specifications subject to change without notice.

