

## Various models of irregularly shaped tees for cable trays



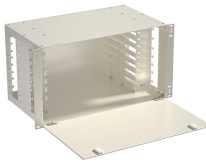
## Various models of irregularly shaped tees for cable trays



Tees have a primary or main width ( $W_m$ ) and a secondary or branch width ( $W_b$ ). Tees with the same primary and secondary widths are called equal tees. Tees with differing main and branch widths are ...



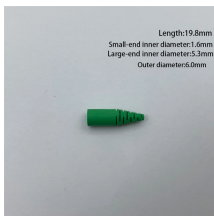
These fittings are essential for managing complex installations where cables must be redirected, distributed, or transitioned across different sections. Proper selection of tee types ensures ...



CleanTray Wireway right-angle installations for two 90-degree turns in frequent washdown areas. This 90-Degree Tee CleanTray, CT44TICSS item measures 4.00x4.00in with a material of SS304 finish ...



To facilitate easy installation of cable trays we also manufacture accessories e.g. Vertical bend, horizontal bend, cross and horizontal tee. Our range includes vertical bend, horizontal bend, cross ...



Fitting and accessories. with the same or different width of the cable run. All fittings are available in sizes and types corresponding to the straight cable tray sections. These fittings are including: elbow, ...



This document describes the types, materials, dimensions, and fittings for standard cable tray systems. It outlines ladder, perforated, solid bottom, trough, channel, ...



Our cable tray design considerations guide details key factors to consider when designing cable tray systems for industrial and commercial applications. Browse or download the cable tray catalog for ...



Vantrunk Heavy Duty Return Flange cable tray unequal tees have a main width ( $W_m$ ) and a branch width ( $W_b$ ) which are different.



We offer a range of cable crossovers and tees, available in both equal and unequal measures, for light, medium, and heavy duty cable tray systems in widths of 50mm - 900mm.



Discover our Horizontal Tees for cable tray systems. Contact us today for availabilities and receive a quote. Fast shipping for just in time delivery!



WBT's shaped crosswires eliminate cable stress by increasing the support of the cabling, yet still offers the same functionality of wire tray to cut and configure, and utilizes the same splicing and mounting ...



When fitting cable trays and their accessories, the products are cut on site to create changes of direction, adjust sections, etc. Damage can also occur during handling; as a result, both the ...

## Contact Us

For more information, pricing, or custom energy solutions, please contact us:

Website: <https://gdroofing.co.za>

Email: [sales@gdroofing.co.za](mailto:sales@gdroofing.co.za)

Phone: +27 72 418 9365

Address: 22 Electron Avenue, Isando, Johannesburg, 1600, South Africa

This document is for informational purposes only. Specifications subject to change without notice.

