

Vertical distance between power distribution cabinet and cable tray



Overview

Spacing Standards: Electrical (power) and instrumentation (signal/control) cable trays should maintain a minimum vertical and horizontal distance. It also helps reduce the risk of. Below are the key principles to guide the layout of E&I cable trays, focusing on practical, safety, and efficiency aspects.

Separation of Electrical and Instrumentation Cables Electrical on Top, Instrumentation Below: Typically, electrical trays are positioned above instrumentation trays. Regardless, what derating are they using?

Can you lay cables side by side or do you need to maintain 1 cable width in between?

How are you doing this with tie wraps?

How are the hills?

Do you need rollers in the trays?

These rules have to be respected scrupulously by the engineering services, consulting firms, the fitters (external companies, employees of the technical services or employees of the maintenance services, the laboratory agents) implementing or working on cabling systems in the ITER facility during. Annex B of IEC 60364-5-52 is really there for guidance in the most common situations, and I'd say it's useful 99% of the time. But when you get stuck, you have to go back to the IEC 60287 series. The long and the short of it is that the ratio of the.

Vertical distance between power distribution cabinet and cable tray



An equipotential link between cable trays and the copper bar, as well as between cable trays shall be installed. An equipotential link shall be installed approximately every 10 meters following NFC 15-900.



cable trays are equivalent. The mechanical and electrical characteristics, tests, certifications, overall quality management, recommendations mentioned in this technical guide only apply to our own cable ...



You have not referred whether the Instrument Cable - is shielded type or not shielded type. If it is shielded type a gap of 300 MM is sufficient. The shield should be earthed on one end ...



Cable tray length is selected based on the load to be supported, the distance between the supports (also referred to as the span), and handling and installation constraints.



This document outlines clearance requirements for cable trays. It provides a table with clearance dimensions labeled a through k for typical and special clearance ...



In general, vertical spacing for cable trays should be 30 cm (12 in), measured from the bottom of the upper tray to the top of the lower tray. A minimum clearance of 23 cm (9 in) should be ...



Spacing Standards: Electrical (power) and instrumentation (signal/control) cable trays should maintain a minimum vertical and horizontal distance. Industry standards often recommend at least 300mm (12 ...



According to DIN VDE 0298/ part 2 "Application of cables and flexible wires in power installations. Recommended values for current-carrying capacity of cables for fixed installations with ...



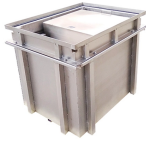
Discover the essential cable tray spacing requirements for safe and efficient installation. Learn key standards, horizontal and vertical spacing, and more.



To put those principles into practice, the following guidelines outline the specific separation requirements critical for compliant and reliable installations. Prior to NEC 2026, many ...



Cables should be routed on the rear sides of the rack using cable management accessories attached to the rear of the rack's vertical channels or in cable management channels on the sides of the rack.



Detail 1 illustrates the treatment of a proximity cable with sections routed in both Class 1E and Non-Class 1E raceways Due to the programming limitation of the computerized cable schedule, such a ...

Contact Us

For more information, pricing, or custom energy solutions, please contact us:

Website: <https://gdroofing.co.za>

Email: sales@gdroofing.co.za

Phone: +27 72 418 9365

Address: 22 Electron Avenue, Isando, Johannesburg, 1600, South Africa

This document is for informational purposes only. Specifications subject to change without notice.

