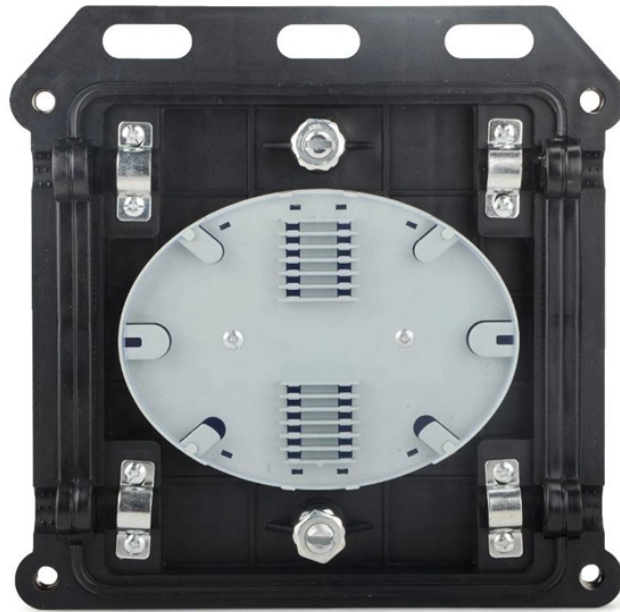


Vulcanizing Machine Relay Protection Board



Vulcanizing Machine Relay Protection Board



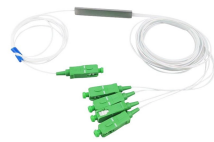
By following these steps—conducting visual inspections, testing components, verifying sensor accuracy, evaluating safety systems, and cleaning contacts—operators can maintain the ...



Control Box - The VUL-CON Switchgear Box is the most advanced control system in the world. Incorporating controls for 2 platens. Splice data can be stored and recalled through the built-in data ...



The guide presents protective relay degradation, reliability, and failure information so as to establish a baseline from which recommended maintenance practices can be linked to a degradation ...



Protective relays and devices have been developed over 100 years ago to provide “lastline” of defense for the electrical systems. They are intended to quickly identify a fault and isolate it so the balance of ...



The utility model discloses a circuit board of a vulcanizing machine control system.



This document provides parts diagrams and descriptions for various vulcanizing equipment components made by Shaw Almex Industries Ltd., including air control ...



This document provides parts diagrams and descriptions for various vulcanizing equipment components made by Shaw Almex Industries Ltd., including air control assemblies, platen cables, and connectors.



Therefore, it must not be operated in areas in which the specific requirements with regard to explosion protection must be applied. The switch box must be protected from frost, moisture, dust, vibrations, ...



The utility model relates to a vulcanizer field, concretely relates to safety device of rubber vulcanizer.



Always use an ALMEX pressure control to pressurize the vulcanizer. Refer to the Air Control Manual or the Hydraulic Pressure Pump Manual if not familiar with their operation.

Contact Us

For more information, pricing, or custom energy solutions, please contact us:

Website: <https://gdroofing.co.za>

Email: sales@gdroofing.co.za

Phone: +27 72 418 9365

Address: 22 Electron Avenue, Isando, Johannesburg, 1600, South Africa

This document is for informational purposes only. Specifications subject to change without notice.

