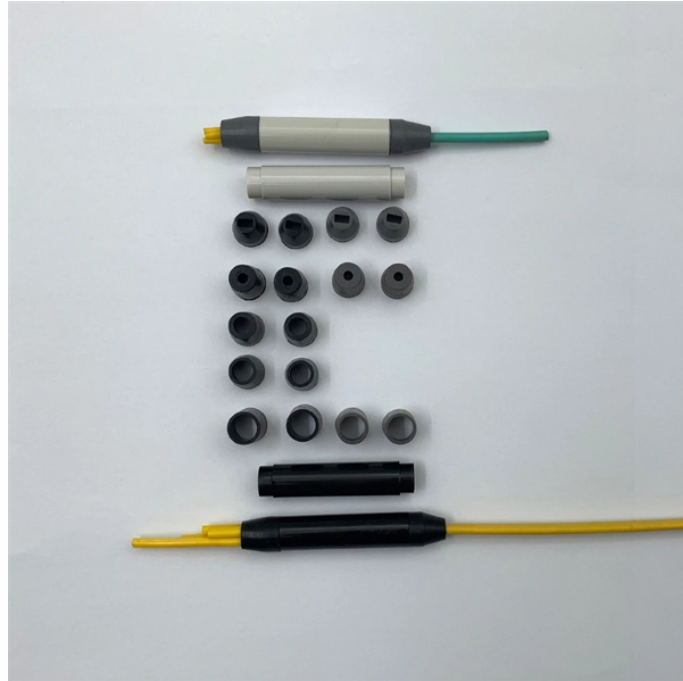


## Weight of 300 galvanized cable tray



### Overview

Let's assume the following specifications for a galvanized steel channel tray:  
Using the formula: Weight per meter (Wm) =  $(100+50) \times 1$ . Export results instantly for schedules, submittals, and field checks. Ladder tray is a practical approximation. Channel trays are one of the most common types of cable trays used for cable management. This definitive guide empowers structural engineers, contractors, and infrastructure developers with comprehensive calculation methods, selection tips, and logistics planning. Working Load Material: Q235 steel, SS304, SS316, Aluminum. Electro zinc plated, Hot Dipped Galvanized, Powder coated. Shipping fee. us-trations without notice. The mechanical and electrical characteristics, tests, certifications, overall quality management, recommendations mentioned.

## Weight of 300 galvanized cable tray



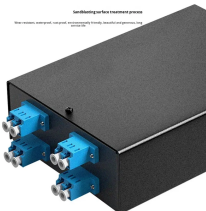
This document contains details of galvanized iron perforated cable trays including tray size, color, thickness, tray length, weight of individual trays, total weight, quantity and volume.



Values are applicable to all resin systems, where possible.



Compute tray weight from dimensions, thickness, and material density. Include covers, perforation, joints, and safety factor options. Download clear CSV and PDF reports for documentation.



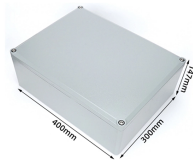
The Standard Dropout (SDO) offers stronger cable support and creates a seamless transition for your cables over the side of your wire mesh tray without any cutting.



If it has excellent electrical continuity and is integrated in the installation's equipotential bonding system, a metal cable tray reduces the coupling's impact and thus contributes to good EMC of the electrical ...



ET EZYTRAY CABLE TRAY 45 Contact EzyStrut for Load Capability information. Supplied in 3m lengths Pre-Galvanised Hot Dip Galvanised Width (mm) Weight Weight (kg) Part No. (kg) Part No. ...



The Cable Tray Weight Calculation involves considering various factors, including tray specifications, material, and thickness. In this guide, we'll walk you through the step-by-step process ...



Light in weight, wide range of sizes. 3. Cables can be secured to clamps or ties. 4. Safe smooth edge design to protect cable. 5. Easy for line check and cleaning, easy maintained. 6. Various hardware ...



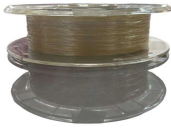
Home > Cable Management > Steel Cable Tray > Heavy Duty Post-Galvanised > 300mm Hot Dipped Galv Return Flange Heavy Duty Cable Tray (3m Length)



Need the cable tray weight chart? Find accurate per-meter weights for steel, aluminum, and FRP trays. Click to explore reliable data for your project needs.



300mm Galvanized Flexible Cable Tray Sizes Weight - Besca Standard or OEM. Durable, versatile, and easy to install. Perfect for various industrial uses. | ...



I-IR]CC (pair) Reducer Part No. HR/R Total length  
250mm Please state sizes required 172mm  
250mm 06 Heavy Duty Cable Tray Part no. HR75T  
HRIOOT HR150T HR225T HR300T Guage mm 0.9  
0.9 ...

## Contact Us

For more information, pricing, or custom energy solutions, please contact us:

Website: <https://gdroofing.co.za>

Email: [sales@gdroofing.co.za](mailto:sales@gdroofing.co.za)

Phone: +27 72 418 9365

Address: 22 Electron Avenue, Isando, Johannesburg, 1600, South Africa

This document is for informational purposes only. Specifications subject to change without notice.

