

What are the dimensions of the optical distribution box sleeve



Overview

It is designed for either pre-connectorized cables or field splicing of Pigtailed cables. Outer Dimensions: 390H x 340W x 165D Main Components: Installation Manual ODB-48/OSB Rev 0. Applications: The telecommunication network, metropolitan area network, optical fiber communication system. LongXing optical distribution boxes are used as a termination point for the feeder. The Optical Distribution Box (ODB) is a high-density 2-in-2-out fiber box solution. Designing with a compact size of 340x220x100mm, the cabinet accommodates 1x2, 1x4, 1x8 and 1x16 etc. The 4 ports are sized for main cable from 9 to 16mm in diameter, along with 16 3mm cables. The fiber splicing, splitting, distribution can be done in this box.

What are the dimensions of the optical distribution box sleeve



The distribution box is used as a termination point for the feeder cable to connect with drop cable in FTTx communication network system. The fiber fixing, splitting, splicing and jumper can be done in ...



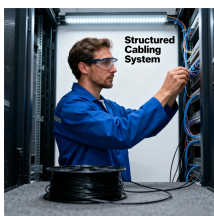
Sole Networks - Fiber Distribution Box Datasheet - Free download as PDF File (.pdf), Text File (.txt) or read online for free. The document provides specifications for various fiber distribution boxes (FDBs) ...



The Optical Distribution Box(ODB) is high-density 2-in-2-out fiber box solution. Designing with a compact size of 340x220x100mm, the cabinet accommodates 1x2,1x4,1x8 and 1x16 etc.splitters. The 4 ports ...



The IP68 Optical Distribution Box (BWN-ODN-8/16) is a pre-connected, weather-resistant fiber distribution solution featuring 1x8 or 1x16 PLC splitters, offering plug-and-play installation for ...



The distribution box for optical fiber is able to support up to 4 subscribers. It is used as a termination point for the power cable for connection with the drop cable in the FTTx network system.

Contact Us

For more information, pricing, or custom energy solutions, please contact us:

Website: <https://gdroofing.co.za>

Email: sales@gdroofing.co.za

Phone: +27 72 418 9365

Address: 22 Electron Avenue, Isando, Johannesburg, 1600, South Africa

This document is for informational purposes only. Specifications subject to change without notice.

