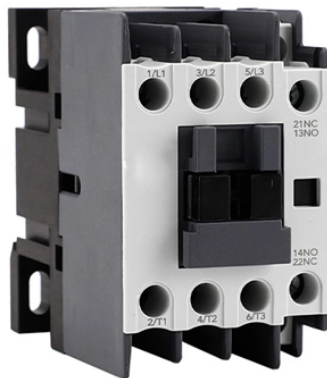


# What are the uses of a 10 Gigabit core switch



## Overview

Through advanced switching technology, a 10GbE switch will help reduce device latency, control the flow of data, and optimize performance. This makes the switch very suitable for applications that consume a lot of bandwidth, such as data centers, video streaming, and transfers. The 10Gb Switch can be understood as a 10 Gigabit switch. Here, 10Gb refers to 10 Gigabit Ethernet, with a speed of up to 10 gigabits per second (10Gbit/s). It is an iterative technology following 10 megabit (10Mb/s), 100 megabit (100Mb/s), and 1 gigabit (1Gb/s) Ethernet. Switch devices with 10Gb/s. Enabling organizations to perform data-heavy workloads, manage bandwidth-intensive applications, and build future-ready networks is the 10 Gb network switch, which, along with other pivot components, allows for this transformative shift. This guide aims to discuss everything concerning the 10 Gb. 10 Gigabit Ethernet (10GbE) is a high-speed telecommunications standard defined by IEEE 802. Unlike legacy Ethernet, 10GbE abandons collision detection protocols entirely, operating exclusively over full-duplex. Enter the 10G Ethernet switch—a technology that significantly enhances bandwidth and connectivity performance, enabling seamless data transfers, video streaming,

and virtualization.

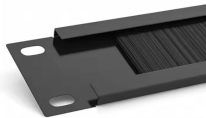
## What are the uses of a 10 Gigabit core switch



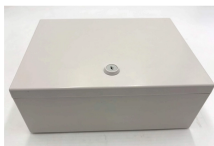
To maximize value, you could add a 10G switch to the existing network. If you want to maximize performance, like also enabling wireless devices to enjoy the broad bandwidth, you could ...



This guide is designed for network engineers, IT administrators, and purchasing managers to understand why 10GbE upgrades are necessary, compare key technologies, and select the best ...



Learn what 10 Gigabit Ethernet (10 GbE) is, its benefits, common use cases, and how to decide if your home or business network needs an upgrade to 10 GbE.



10 Gigabit Ethernet (10GE, 10GbE, or 10 GigE) is a group of computer networking technologies for transmitting Ethernet frames at a rate of 10 gigabits per second. It was first defined by the IEEE ...



10 Gigabit Ethernet, also known as 10GbE and 10G Ethernet, is a telecommunication technology that offers data speeds up to 10 billion bits per second. This article introduces its ...



To maximize value, you could add a 10G switch to the existing ...



Using MC-LAG (such as Cisco's vPC or StackWise Virtual), a downstream switch can use two 10GbE links to connect to two physically separate, but logically unified, core switches. This ...



This guide explains the workings, benefits, and best practices for 10G switch solutions while helping you choose the ideal switch for your network infrastructure.



This guide explains the workings, benefits, and best practices for 10G switch solutions while helping you choose the ideal switch for your network infrastructure.



Through advanced switching technology, a 10GbE switch will help reduce device latency, control the flow of data, and optimize performance. This makes the switch very suitable for ...



The 10Gb/s Switch provides high-speed data transmission in data centers and server clusters, meeting the need for fast communication between servers, especially in virtualization and ...



This is 10 times faster than the standard Gigabit connections found in most homes. It is the preferred backbone for businesses handling high-resolution video editing, large-scale virtualization, and rapid ...

## Contact Us

For more information, pricing, or custom energy solutions, please contact us:

Website: <https://gdroofing.co.za>

Email: [sales@gdroofing.co.za](mailto:sales@gdroofing.co.za)

Phone: +27 72 418 9365

Address: 22 Electron Avenue, Isando, Johannesburg, 1600, South Africa

This document is for informational purposes only. Specifications subject to change without notice.

