

What are the uses of an LR optical module



Overview

It is typically implemented using SFP+ transceivers and defined under IEEE 802.10GBASE-LR is a 10-gigabit Ethernet optical standard that operates at 1310 nm over single-mode fiber (SMF), supporting link distances of up to 10 km. 10G-LR module has become one of the most widely. SFP+ SR, LR, and ER modules are the cornerstone of 10G fiber optic networking. However, facing the numerous models on the market, such as LRM, SR, LR, ER, ZR and other optical modules, how to choose the most suitable. Deploying a 10G network requires careful selection of optical transceivers to ensure performance, cost efficiency, and compatibility. Each has distinct characteristics tailored to.

What are the uses of an LR optical module



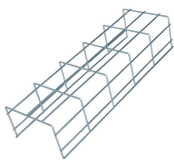
Choosing the right optical module is vital for network efficiency. From SR for local connections to ZR for long-haul links, each module type plays a key role in network design and ...



Learn optical module selection for future-proof networking: compare SR vs LR, 10G vs 25G, cost and compatibility, plus troubleshooting and ROI for real deployments.



This definitive guide compares 10G dual fiber optical modules by distance, fiber type, and application to help you choose the right one for your data center or network.



A practical, engineer-grade guide to 10GBASE-LR: what it is, 1310nm single-mode SFP+ specs, optical budget examples, deployment best practices and troubleshooting.



This article provides insights into the technicalities and uses of the Cisco SFP-10G-LR module, such as its compatibility, performance metrics, and ...



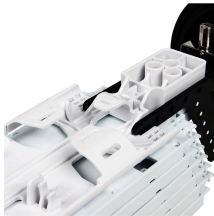
LR means Long Reach, these transceivers support distance up to 10km over single-mode fiber and use 1310nm lasers. There is no minimum distance for LR, either, so it is suitable for short ...



By deeply understanding the differences and performance of LRM, SR, LR, ER, and ZR optical modules, we can make the right choice among many optical modules, thereby building an ...



This article provides insights into the technicalities and uses of the Cisco SFP-10G-LR module, such as its compatibility, performance metrics, and deployment scenarios, among others.



By deeply understanding the differences and performance of LRM, SR, LR, ER, and ZR optical modules, we can make the right choice among many optical modules, thereby building an ...



Deploying a 10G network requires careful selection of optical transceivers to ensure performance, cost efficiency, and compatibility. Among the most widely used 10G SFP+ modules are ...



LR (Long Reach) modules operate with a wavelength of 1310nm and require single-mode fiber to extend the effective distance to roughly 10 km. This is adequate to cover campus backbones ...

Contact Us

For more information, pricing, or custom energy solutions, please contact us:

Website: <https://gdroofing.co.za>

Email: sales@gdroofing.co.za

Phone: +27 72 418 9365

Address: 22 Electron Avenue, Isando, Johannesburg, 1600, South Africa

This document is for informational purposes only. Specifications subject to change without notice.

