

What are the uses of outdoor optical distribution boxes



Overview

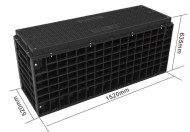
An outdoor termination box (often called a fiber optic distribution box or outdoor terminal box) is an enclosed enclosure used in outdoor environments. These boxes are designed to withstand harsh weather conditions, physical impacts, and environmental factors, making them vital for deploying fiber networks across. Indoor and outdoor fiber boxes serve different roles in FTTH, ODN, and enterprise network distribution. It is designed to serve as a building entry point for FTTH applications but is also a perfect choice for all types of FTTx applications.



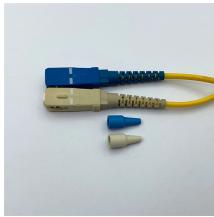
What are the uses of outdoor optical distribution boxes



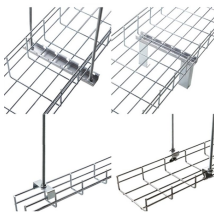
Choosing the right outdoor fiber optic box helps protect delicate connections while simplifying field installation. The products below are selected for durability, weather resistance, and ease of use in ...



Indoor and outdoor fiber boxes serve different roles in FTTH, ODN, and enterprise network distribution. While both provide termination, splicing, and cable routing functions, their structural ...



It is designed to serve as a building entry point for FTTH applications but is also a perfect choice for all types of FTTx applications. The optical distribution box provides versatility, enabling fusion splicing, ...



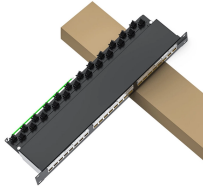
Designed for plug-and-play installation, this outdoor optical distribution box reduces on-site splicing, shortens deployment cycles, and improves installation consistency across large-scale ODN projects. ...



An outdoor termination box (often called a fiber optic distribution box or outdoor terminal box) is an enclosed enclosure used in outdoor environments. Its main function is to terminate, protect, connect, ...



AZE's Outdoor Fiber Optic Distribution Box is applicable in FTTH project and suitable for building's outer walls application; They can distribute cables after installing splitters and also can draw out room fiber ...



The outdoor fiber distribution boxes can be mounted on walls or poles. When used in aerial networks, they are often part of pre-terminated drop cable solutions for easy and quick connection of ...



A fiber distribution box or outdoor fiber distribution box is an important piece of equipment used in fiber optic networks to terminate and manage fiber optic cable connections.



A fiber distribution box or outdoor fiber distribution box is an important piece of equipment used in fiber optic networks to terminate and manage fiber optic cable ...



Outdoor fiber distribution boxes are designed to endure harsh environmental conditions while keeping your Fiber Optic Cables protected and your network functioning. Distribution boxes provide an ...



Outdoor Fiber Optic Distribution Boxes are weather-resistant enclosures that protect fiber optic cables and connections outside buildings or in open environments.

Contact Us

For more information, pricing, or custom energy solutions, please contact us:

Website: <https://gdroofing.co.za>

Email: sales@gdroofing.co.za

Phone: +27 72 418 9365

Address: 22 Electron Avenue, Isando, Johannesburg, 1600, South Africa

This document is for informational purposes only. Specifications subject to change without notice.

