

What connections are there in the distribution box



What connections are there in the distribution box



A distribution box uses MCBs, RCDs, and busbars to protect circuits, prevent shocks, and ensure safe power distribution in homes and buildings.



Learn what a distribution box is, its types, and how to choose the right one for your project. Includes clear examples and expert tips.



Understanding its significance, this article covers what a distribution box is, how it functions, its structure, the various types available, and how it differs from other electrical boxes like ...



By knowing their great importance, this article explains what a distribution box is, how it works, what its structure looks like, what types of distribution boards are, and how it is different from ...



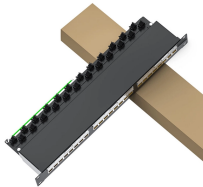
A distribution board or distribution box is where the main power supply is distributed to multiple loads. And all the switching and protective devices are installed in the distribution box.



Inside a distribution box are components like circuit breakers, earth leakage units, doorbells, and timers. The building's electrical power enters through the main feeding cable, which ...



A: A junction box is primarily used to connect electrical wires, while a distribution box is designed to distribute power to various circuits. The distribution box typically contains circuit breakers ...



What's the difference between a distribution box and a sub-panel? A distribution box typically refers to the main electrical panel that receives power from the utility service. A sub-panel is ...



Understand distribution boxes (DB boxes) in 5 minutes. Learn about types, components, functions, and uses. Find the perfect DB box for your needs.



In this guide, we've explored the essential components and functions of a distribution box, including how it distributes electricity, provides safety through circuit breakers and fuses, and ...

Contact Us

For more information, pricing, or custom energy solutions, please contact us:

Website: <https://gdroofing.co.za>

Email: sales@gdroofing.co.za

Phone: +27 72 418 9365

Address: 22 Electron Avenue, Isando, Johannesburg, 1600, South Africa

This document is for informational purposes only. Specifications subject to change without notice.

