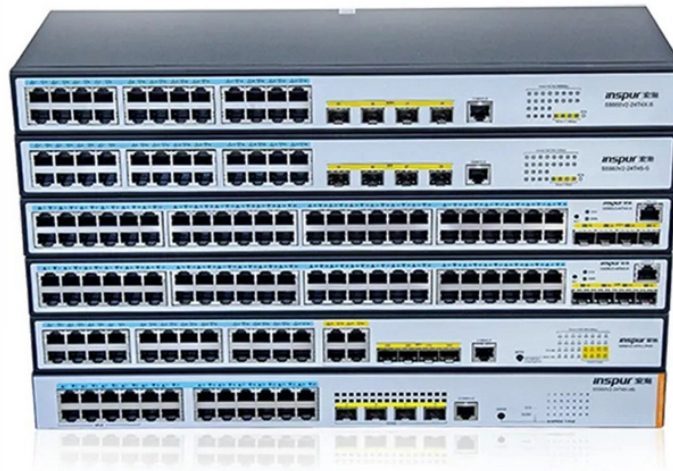


What does enable control mean in an optical module



Overview

Enable pins are used when multiple devices share some other resources - e.g, data pins, control signals etc. By selecting the desired device with 'enable', only that device responds to the control commands on those shared pins. When you plan to replace a configured optical module with a different type of optical module, you must clear the configurations of the old module before you install the new module. The modules use defined registers and CDB commands to advertise optional capabilities and module application information. Many of the features in CMIS are optional and within each feature there may be additional configuration. The spectroscopic module with light sources is equipped with an automatic power control (APC) function for the LED, which suppresses fluctuations in the light intensity and allows a constant light intensity to always be irradiated. Its primary function is to achieve optoelectronic conversion by converting electrical signals into optical signals and vice versa. reserves the right to make changes, without notice, to the products described in this document, in the interest of improving design, operational function and/or reliability. Other names and trademarks mentioned herein may be the trademarks of their respective owners. Among

various optical module form factors, SFP (Small Form-Factor Pluggable).

What does enable control mean in an optical module



No communication with the module via I2C should be required, all you need to do is tie the RESETL pin high and the LPMODE pin low and the module should turn on and operate normally.



By selecting the desired device with "enable", only that device responds to the control commands on those shared pins, In another example, "enable" is slightly misnamed - e.g. some ...



Additionally, identifying module information helps detect coding compatibility between the module and the switch. The following introduces the specific operations to view the working status ...



CMIS-VCS provides a mechanism for the module to advertise its supported SI controls and the layout of those controls in the memory space. This versatile control set definition enables expansion of SI ...



Two key metrics affected by temperature are output optical power and extinction ratio (Er)—both of which require active control to ensure stable module operation.



In the ILA mode, the LINE-RX and COM-TX ports of the optical amplifier module are enabled whereas the LINE-TX and COM-RX ports of the optical amplifier module are disabled.



Explore the ultimate guide to optical modules. Learn types, functions, performance metrics & how to choose the right module for your fiber network.



The CLA is a family of low noise, high performance EDFA designed to support cost effective and turnkey amplification solutions for fiber optic networks. The CLA EDFA includes 2 in 1 Pre Amp and Booster ...



The spectroscopic module with light sources is equipped with an automatic power control (APC) function for the LED, which suppresses fluctuations in the light intensity and allows a constant light intensity to ...



As an important part of fiber-optic communication, an optical module is a photoelectric converter which converts electrical signals into optical signals and vice versa. An optical module works at the physical ...

Contact Us

For more information, pricing, or custom energy solutions, please contact us:

Website: <https://gdroofing.co.za>

Email: sales@gdroofing.co.za

Phone: +27 72 418 9365

Address: 22 Electron Avenue, Isando, Johannesburg, 1600, South Africa

This document is for informational purposes only. Specifications subject to change without notice.

