

What does intelligent cable tray include



Overview

The system includes straight sections, fittings, and support hardware. This change is making our electrical and data networks more dependable, safer, and much more efficient. This article explores what makes a cable tray “smart. ” We will look at where we. A cable tray system is a structural support pathway designed to hold, route, and organise electrical and data cables. Rather than enclosing cables inside conduit, cable trays provide an open, ventilated support system that allows: Because of this flexibility, cable trays are commonly used in. The Wire Basket Overhead Cable Tray Routing System is a robust cable management solution that optimizes system reliability, space utilization and scalability. It provides speed of deployment, structural integrity, cable protection and ease of use to drive business results.

What does intelligent cable tray include



In modern data centers, cable trays manage the sheer volume of power and data wiring required to connect thousands of servers and network devices. They serve as a practical alternative to pulling ...



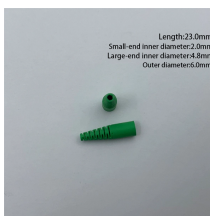
Learn how to choose the best cable tray system for your needs. Explore types, materials, installation tips, and NEC compliance in this expert guide.



In this guide, we explain what cable trays are, the main types available, how to choose the correct size and duty rating, and what to consider when designing a cable tray installation.



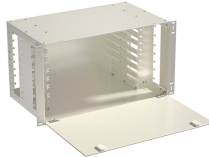
Learn how to choose the best cable tray system for your needs. Explore types, materials, installation tips, and NEC compliance in this expert guide.



Our aluminum, I-beam ladder cable trays feature 3-inch tangents and are using connectable with our fittings and accessories. Aluminum ladder cable trays benefit from being lightweight and resistant to ...



It provides speed of deployment, structural integrity, cable protection and ease of use to drive business results. The wire basket is up to 20 percent lighter than competing brands and features larger ...



Discover how a smart cable tray works, its key applications in data centres and industries, and future developments transforming cable management.



This article explains the main requirements and good practices for cable tray systems, including tray types, materials, loading, supports, bonding, cable selection, and installation details.



Master cable tray systems with our expert guide covering structural engineering, material selection, and NEC compliance to ensure safe, efficient, and scalable industrial cable management.



When fitting cable trays and their accessories, the products are cut on site to create changes of direction, adjust sections, etc. Damage can also occur during handling; as a result, both the ...



Cable tray length is selected based on the load to be supported, the distance between the supports (also referred to as the span), and handling and installation constraints.



In this guide, we explain what cable trays are, the main types available, how to choose the correct size and duty rating, and what to consider when designing a ...

Contact Us

For more information, pricing, or custom energy solutions, please contact us:

Website: <https://gdroofing.co.za>

Email: sales@gdroofing.co.za

Phone: +27 72 418 9365

Address: 22 Electron Avenue, Isando, Johannesburg, 1600, South Africa

This document is for informational purposes only. Specifications subject to change without notice.

