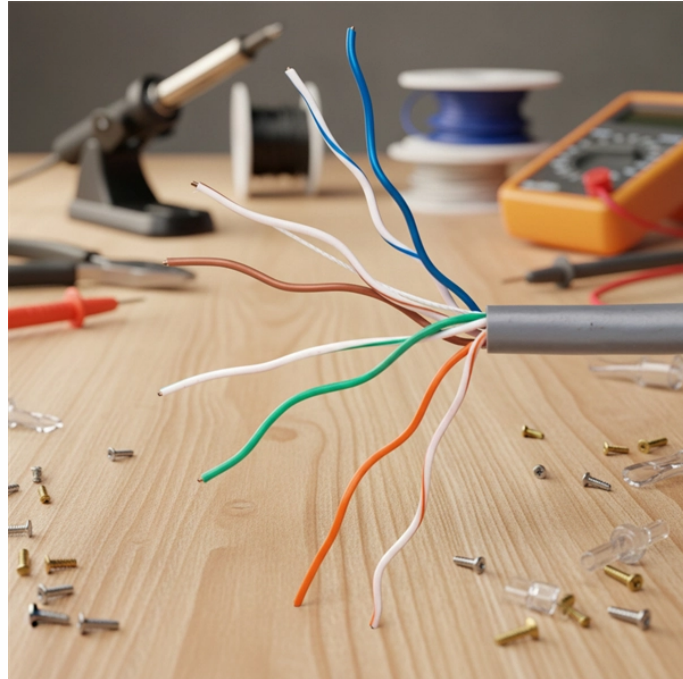


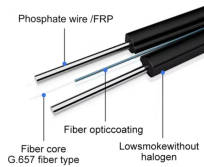
## What instruments are needed in a primary distribution box



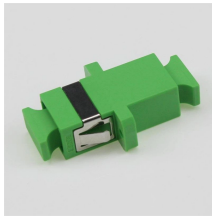
## What instruments are needed in a primary distribution box



Learn what a distribution box is, its types, and how to choose the right one for your project. Includes clear examples and expert tips.



This ultimate guide explains what a distribution box does, its internal components, common types, real-world applications, and how to select the right DB Box for your project.



Inside a distribution box are components like circuit breakers, earth leakage units, doorbells, and timers. The building's electrical power enters through the main feeding cable, which ...



A typical primary distribution substation would include air-insulated outdoor-type high-voltage side (HV) and a metal-enclosed air-insulated indoor-type medium-voltage switchgear (MV).



It is required to assemble switchgear, measuring instruments, protective appliances and auxiliary equipment in a closed or semi-closed metal cabinet or on the screen to form a low-voltage ...



A distribution box is according to the electrical wiring requirements of the switchgear, measuring instruments, protection appliances, and auxiliary equipment assembled in the enclosed or ...



In this guide, we've explored the essential components and functions of a distribution box, including how it distributes electricity, provides safety through circuit breakers and fuses, and ...



Understand distribution boxes (DB boxes) in 5 minutes. Learn about types, components, functions, and uses. Find the perfect DB box for your needs.



Distribution boards, often referred to as electrical panels or breaker boxes, serve as the nerve center of any electrical system. Here we explore the crucial parts of a distribution board and gain insights into ...



The box usually contains switches, fuses, or circuit breakers that control the flow of electricity. Distribution boxes vary in size and shape based on the complexity of the electrical system ...

## Contact Us

For more information, pricing, or custom energy solutions, please contact us:

Website: <https://gdroofing.co.za>

Email: [sales@gdroofing.co.za](mailto:sales@gdroofing.co.za)

Phone: +27 72 418 9365

Address: 22 Electron Avenue, Isando, Johannesburg, 1600, South Africa

This document is for informational purposes only. Specifications subject to change without notice.

