

## What interface is typically used for fiber optic splice trays



### Overview

Corning's fiber distribution interface (FDI) is a splice-based fiber flexibility point for indoor and outdoor locations. What is a Fiber Splice Tray Used for?

What is a Fiber Splice Tray Used for?

With the increasing development of optical fiber networks, optical fiber terminals using fusion splicing or mechanical fusion have become common. Because optical fibers are sensitive to pulling, bending, and crushing. With the growth of FTTH, FTTx, and telecom fiber networks, the management of fiber optic splicing plays an increasingly important role in network reliability, performance, and maintainability. Since the need for higher data rates and effective communication gets more robust, the utilization of optical fibers has become increasingly widespread across multiple spheres of. Typically ships in 28 day (s)?

Actual lead time confirmed upon receipt of order. Four sizes of interchangeable Propel fiber.

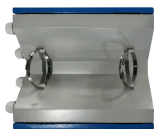
## What interface is typically used for fiber optic splice trays



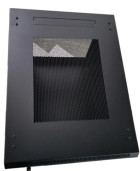
COYOTE splice trays are injection molded and have hinged, clear plastic covers to protect and allow for visible inspection of the fibers. They are available in Legacy and LITE-GRIP® styles, each providing ...



Fiber optic splice trays are used in a variety of telecom and FTTH applications: Installed inside dome or horizontal SLT closures, used to manage fiber splice in core, distribution, and access ...



Fiber splice trays are typically used to hold and protect individual fiber splices. There are two main types of fiber optic connectors one is fusion splicing, and the other is mechanical splicing. ...



Explore CommScope's efficient and scalable fiber splice panels designed for seamless connectivity. Accommodating LC, SC, and MTP/MPO connectors, these panels are ideal for data centers, ...



Most splice trays have radius guides in their design, which prevents fibers from being too straightened. When working with splice trays, it is essential to observe the required minimum bend ...



Horizontal type Fiber Optic Splice Closure usually contains one or more fiber splice trays to provide space and protection for fiber optic splices. Fiber splice trays used in different fiber optic ...



Splice trays are used to organize and protect fiber optic splices. They are typically made of plastic or metal and have slots for the fiber optic connectors. Splice kits are used to terminate fiber optic ...



Corning's fiber distribution interface (FDI) is a splice-based fiber flexibility point for indoor and outdoor locations. It is designed for fiber-to-fiber administration instead of buffer tube-to-buffer tube or ribbon ...



Splices are generally placed in a splice tray which is then placed inside a splice closure or integrated into a fiber pedestal for OSP installations. For premises applications (indoors) splice trays are often ...



A fiber splice tray is typically a tray or panel with slots or compartments where individual fiber optic cables can be neatly arranged and spliced together. It is deployed in fiber enclosures, ...



Fiber optic splice trays are used in a variety of telecom and FTTH applications: Installed inside dome or horizontal SLT closures, used to manage ...

## Contact Us

For more information, pricing, or custom energy solutions, please contact us:

Website: <https://gdroofing.co.za>

Email: [sales@gdroofing.co.za](mailto:sales@gdroofing.co.za)

Phone: +27 72 418 9365

Address: 22 Electron Avenue, Isando, Johannesburg, 1600, South Africa

This document is for informational purposes only. Specifications subject to change without notice.

