

## What is EVB in an optical module



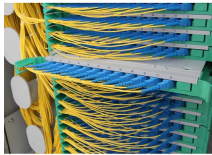
## What is EVB in an optical module



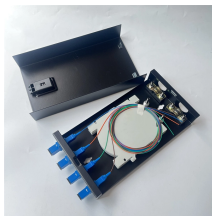
**ABSTRACT:** This implementation agreement defines a form factor optimized for external lasers delivering continuous wave (CW) light to optical transceivers co-packaged within a system. They are ...



It is important to understand the difference between a module and an EVB for working with Murata solutions, and how they relate to an EVK. These three terms are common in documentations and ...



This application note introduces onsemi's latest E1B power module DPT EVB (half-bridge and full bridge). To fully exploit the fast-switching capability of SiC devices, critical design guidelines must be ...



Quectel's 5G-M2 EVB is an assistant tool for developers to develop applications and test basic functionalities of applicable modules.



Some component manufacturers will produce an evaluation board so a component can be evaluated in a particular application. For example, consider the LM3464EVAL from Texas ...



**DESCRIPTION** The Avalanche Photo-Diode Receiver Module consists of a key Oclaro's avalanche photo-receiver, which integrate a low-noise preamplifier and a precision NTC thermistor in a hermetic ...



The Silicon Labs' OCCUPANCY-EXP-EVB evaluation kit is an ex-pansion board for EFM32 Starter Kits (STKs). The evaluation kit is intended for demonstration and evaluation of an occupancy sens-ing ...



This product is designed to evaluate the performance of QSFP+ and QSFP28 packaged active modules with four input/output channels in each transmitting and receiving terminal.



This user's manual explains connection, configuration, and operation information for the MMCEVB1200PV Evaluation Board (EVB), a standalone development tool of Motorola's M•CORE™ ...



Explore the ultimate guide to optical modules. Learn types, functions, performance metrics & how to choose the right module for your fiber network.



2.1. Applicable Modules UMTS& LTE EVB is applicable to the following module models.



The LOX-EVB Evaluation Interface Board enables straightforward testing of LuminOx sensors. It provides three simultaneous outputs: RS232 (serial voltage levels) RS485 (Modbus RTU) for multi ...

## Contact Us

For more information, pricing, or custom energy solutions, please contact us:

Website: <https://gdroofing.co.za>

Email: [sales@gdroofing.co.za](mailto:sales@gdroofing.co.za)

Phone: +27 72 418 9365

Address: 22 Electron Avenue, Isando, Johannesburg, 1600, South Africa

This document is for informational purposes only. Specifications subject to change without notice.

