

What is ZDT cable tray



Overview

ZT - Cable trays and Trunkings - Applications: Ideal for civil and industrial electrical systems. Available in the catalogue in heights of 50/75/100 mm, with safety profile and guaranteed rigidity even at low thicknesses. All elements are designed for earthing. IMQ certified series and compliant with EN 50085, EN 61537, UL file. Hubbell's NEXTFRAME® Ladder Tray is the effective and widely used cable runway that supports and delivers bundles of cable between cabinets, racks, and closets, along walls, and suspended from ceilings. The Ladder Tray features light, rugged, tubular steel construction. The selection of material and finish is a function of the environment in which it is used in a wide range. You can change your choice at any time by going to the bottom of each page and clicking on "Manage your privacy". Zamet SpA is one of the major Italian manufacturers of trunking systems for the conveyance of electric cables both in the civil and industrial environments, and it boasts over 40 years. With non-slip treaded covers to optimize slip resistance, the BKRS Walkable Cable Tray ensures your cables get the best defense. They provide reliability, ease of installation, and cost savings both initially and

What is ZDT cable tray



Chalfant Ladder Cable Tray Systems are ideal for indoor and outdoor cable management. They provide reliability, ease of installation, and cost savings both initially and long term.



What is cable tray? Learn about its types, uses in industries, safety benefits, and how it organizes and supports cables in various environments.



Cable trays provide an effective solution for organizing cables while also making them easy to access. They can be used to organize all types of cables, including coaxial, electrical, fiber optic, and ...



Cable tray is considered to be a system. It must provide continuous support for cables, and the electrical continuity of the cable tray system must be maintained.



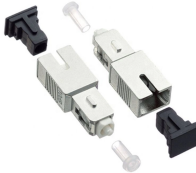
Explore all types of cable trays—ladder, perforated, basket, solid, and channel. Learn their uses, materials, pros, cons, and key differences.



This article will explore the different types of cable trays, the materials used, and their benefits in a wide range of applications. Understanding these elements is key to optimizing both the performance and ...



Z Cable Tray Solutions Overview This document provides information on Z cable tray products from Enduro Composites, including: - Straight sections, fittings, splices, and accessories for cable tray ...



The Ladder Tray features light, rugged, tubular steel construction. It is designed for mechanical support and strain relief in long runs of cable and creates a smooth gradual bend for cable. Rail and stringer ...

Contact Us

For more information, pricing, or custom energy solutions, please contact us:

Website: <https://gdroofing.co.za>

Email: sales@gdroofing.co.za

Phone: +27 72 418 9365

Address: 22 Electron Avenue, Isando, Johannesburg, 1600, South Africa

This document is for informational purposes only. Specifications subject to change without notice.

