

What is an SFP in an optical module



What is an SFP in an optical module



SFP optic modules convert electrical to optical signals for fast, long-distance data transfer. Hot-swappable, versatile, and compatible with various speeds/cables, they're essential for networks.



The SFP optical module is a standardized, modular assembly designed to be quickly installed or removed from a device's port without requiring the device to be powered down. This key ...



SFP (Small Form-factor Pluggable) modules are compact, hot-swappable transceivers used to connect network devices such as switches, routers, and servers. They convert electrical ...



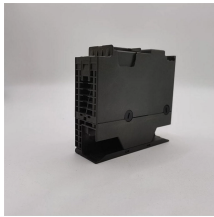
An SFP module is a small, pluggable optical transceiver that fits into the SFP port of a networking switch or other device. Sometimes, it is known as the mini-GBIC (gigabit interface ...



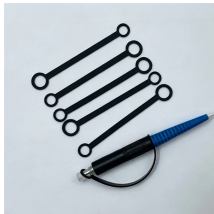
Small Form-factor Pluggable (SFP) is a compact, hot-pluggable ...



SFP modules are removable, standardized optical transceivers that enable modular media deployment. They convert signals between electrical and optical media and can support ...



SFP module is a compact, hot-pluggable optical transceiver module, which is widely used for both telecommunication and data communications applications. It is also known as small form ...



An SFP module works by transforming electrical signals from network devices into optical signals for transmission over fiber optic cables and vice versa. It contains a transceiver with ...



Small Form-factor Pluggable (SFP) is a compact, hot-pluggable network interface module format used for both telecommunication and data communications applications.



SFP (Small Form-factor Pluggable) is a compact, hot-pluggable network interface module used to connect network devices (switches, routers, firewalls) to fiber optic or copper cables.



A SFP (Small Form-Factor Pluggable) module is a compact, hot swappable transceiver used in networking to connect devices like switches, routers and network interface cards (NICs) to fiber optic ...

Contact Us

For more information, pricing, or custom energy solutions, please contact us:

Website: <https://gdroofing.co.za>

Email: sales@gdroofing.co.za

Phone: +27 72 418 9365

Address: 22 Electron Avenue, Isando, Johannesburg, 1600, South Africa

This document is for informational purposes only. Specifications subject to change without notice.

