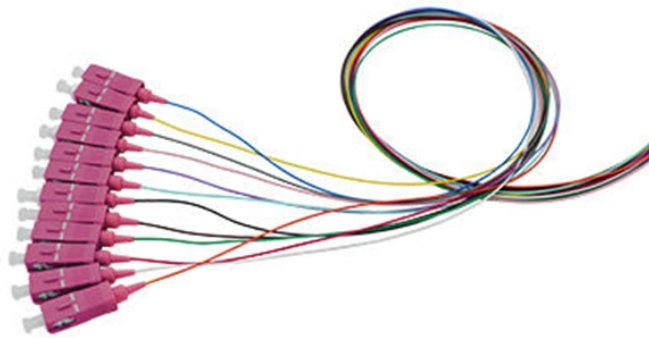


What is the required height for communication towers



What is the required height for communication towers



In practice, this means your local zoning board can require a special use permit, impose height caps, demand setbacks equal to or greater than the tower's height, and insist on stealth ...



Towers that meet certain height and location criteria (generally towers more than 200 feet above ground level or located near an airport) require notice to the FAA and ASR registration with the FCC.



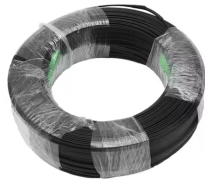
Telecom towers are subject to federal regulations to protect airspace safety and communication integrity for wireless communications and public infrastructure. Aviation safety approvals are required when ...



This page contains links to the FCC and FAA web sites explaining height limits for towers and other structures and when they must be marked with red and white paint or white strobe lights in ...



Discover how tall radio towers typically are and the factors that influence their height. Learn about different types of radio towers and their uses in communication networks.



In order to erect or maintain communication towers, employees regularly climb towers, using fixed ladders, support structures or step bolts, from 100 feet to heights in excess of 1000 or 2000 feet.



For towers other than towers in the public rights-of-way, it increases the height of the tower by more than 10% or by the height of one additional antenna array with separation from the nearest existing ...



The ideal mobile tower height typically ranges from 50 to 200 feet (15-60 meters) for urban macro cells, and 150 to 400 feet (45-120 meters) for rural coverage.



For some towers, the FAA can permit an Aircraft Detection Lighting System (ADLS), which maintains a communication tower of any height to be unlit until the ADLS radars detect nearby aircraft, at which ...



The height of a tower and/or antennae mounted on a building, water tank, or other structure, other than a free-standing or guyed communications tower, shall not be more than 30% of the structure height ...

Contact Us

For more information, pricing, or custom energy solutions, please contact us:

Website: <https://gdroofing.co.za>

Email: sales@gdroofing.co.za

Phone: +27 72 418 9365

Address: 22 Electron Avenue, Isando, Johannesburg, 1600, South Africa

This document is for informational purposes only. Specifications subject to change without notice.

