

What is the size of a 13-circuit distribution box

Product Photography



Overview

AT-13 supports 13 circuits in a single-row layout. Zero row: 8 holes; Ground row: 8 holes. The AT-13 waterproof distribution box is IP65 rated with waterproof sealing strips, suitable for both indoor and outdoor use (IEC 60529). What size distribution box do you need for a house?

How do you know which circuit breaker to use?

Can you add more breakers later?

Why do you need GFCI or AFCI breakers?

Choosing the right size and setup for your distribution box keeps your electrical system safe and working well. Built from PC/ABS new material, it features a assembly (960 °C hot wire test). For the complete product family, visit the Waterproof. Breaker boxes are central components of electrical systems and help distribute power and manage circuits within a building. BAHRA Load Centers are powered by the best selection of international proven

quality of breakers by BAHRA to provide reliable circuit protection against. Combination illuminating distribution box is suitable for distribution control of modern buildings, such as large stores, guesthouse, stations, commercial net points, laboratories, factories and enterprises, used in AC 50-60hz, below 500V illuminating and mini power controlling circuit as over. Large electrical power distribution boxes come in several sizes—single-gang for one device, double-gang for two, and so on. Check out this quick guide: Think about how many devices you need, where you will install the box, and the environment.

What is the size of a 13-circuit distribution box



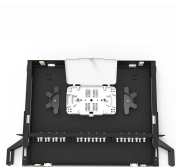
Choose the right size and setup for multiple circuit breakers in your distribution box to ensure safety, code compliance, and room for future upgrades.



13-circuit waterproof distribution box, single-row design with bottom opening for easy wiring and maintenance. IP65 sealing and PC/ABS housing for reliable indoor/outdoor performance and impact ...



Choosing the right electrical box size is crucial for safety and efficiency. Consider the number of devices and future upgrades to avoid overcrowding. Single-gang boxes are ideal for one ...



Metal Electrical Switch Box Series: V11 series
Name: Metal Electrical Switch Box Model No.: DX11-A12-1 Unit: 12 units Installation: Flush Mounted in the wall View Detail



High Quality MCB Distribution Box Size / 4/6/8/12/14/16/20/24 ...



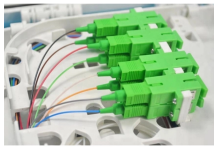
High Quality MCB Distribution Box Size / 4/6/8/12/14/16/20/24 Ways, Find Details and Price about Distribution Box Junction Box from High Quality MCB Distribution Box Size / 4/6/8/12/14/16/20/24 ...



Flush mount Choice of 12-way and 20-way, to accommodate • 13 Mm width products 12-Way available in steel or plastic 20-Way available in steel or plastic Surface mount: 13-Way (CBI Mini Rail) 13-Way ...



Learn about control panels, breaker boxes, junction boxes, and custom enclosures. Explore standard panel sizes, applications, and key differences for residential, commercial, and ...



They house circuit breakers that control electricity flow to different areas of a home or workspace. Explore our available breaker boxes at Lowe's to find options in a range of sizes and configurations ...



This guide explains standard electrical box dimensions by type, compares common sizes, and helps you select the right box for residential, commercial, and light industrial applications.



They allow for easy wire routing, identification and easy maintenance. The optimized size of the product makes transporting and handling easy and also prevents the need of a large pocket in the wall for ...

Contact Us

For more information, pricing, or custom energy solutions, please contact us:

Website: <https://gdroofing.co.za>

Email: sales@gdroofing.co.za

Phone: +27 72 418 9365

Address: 22 Electron Avenue, Isando, Johannesburg, 1600, South Africa

This document is for informational purposes only. Specifications subject to change without notice.

