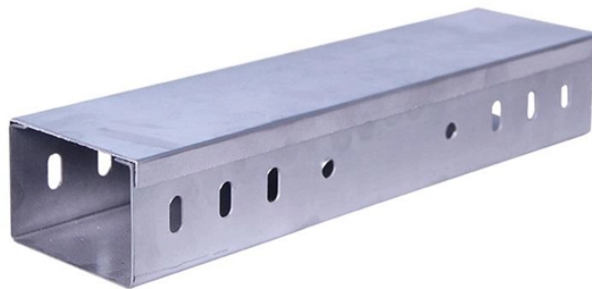


What kind of grounding is used for distribution boxes



Overview

26 mm² (10 AWG) ground wire must be used, and in all other markets a 6 mm² must be used. On the US market, a 5. Each DISTRIBUTION BOX and controller must be grounded. Grounding of the units: Attach a ground wire from one of. Whether you're a seasoned pro or just starting out, this comprehensive guide will give you practical insights into proper grounding techniques, with a special focus on how selecting quality materials from a reliable building material supplier impacts your entire system's safety and longevity. Grounding is a mechanism to protect distribution equipment and people under normal operating conditions, abnormal operational (overcurrent and overvoltage) responses, and hazardous conditions such as shocks. This helps to reduce the potential difference that exists between conductive parts and the earth. Equipment Protection: Grounding protects substation. Abstract - The most common medium voltage electric dis-tribution system in the United States is multigrounded wye using a common neutral for both primary and secondary systems. Any engineer dealing with power supply networks needs to understand the basic.

What kind of grounding is used for distribution boxes



Good system grounding provides the path for normal load and fault currents while maintaining load and controls temporary overvoltages. Good equipment grounding ensures personnel safety.



If a distribution circuit is added to subtransmission pole with 7-#10 Copperweld or #6 Cu. pole ground wire and the static wire is used for the distribution system neutral, the pole ground wire must be ...



Whether you're a seasoned pro or just starting out, this comprehensive guide will give you practical insights into proper grounding techniques, with a special focus on how selecting quality materials ...



High-Resistance Grounding (HRG): To provide a safe amount of ground fault current, HRG systems employ a high-resistance grounding resistor. This approach keeps the system running even when ...



Essentially this workshop is broken down into system grounding, protective grounding and surge/noise protection of power and electronics systems normally found in distribution networks.



Equipment-Grounding Conductor — In addition to making good connections through each bolt or stud, use either 1-inch copper braid or 8 AWG minimum stranded copper wire to connect each chassis, ...



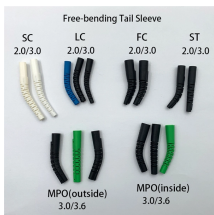
The EC3GB type ground bars are intended for use in Siemens and Murray brands of load centers and electrical distribution equipment. The ground bars can be mounted in one of 4 locations inside the ...



Each DISTRIBUTION BOX and controller must be grounded. On the US market, a 5.26 mm 2 (10 AWG) ground wire must be used, and in all other markets a 6 mm 2 must be used.



Each Power Circuit Breaker or Power Transformer having a bushing Voltage Transformer on the tank shall have the Voltage Transformer provided with a separate ground lead, independent of the ...



In the United States, typically reactance is used to ground the neutral on the low-voltage side of the delta-wye-connected distribution substation transformers.



Effective grounding, or earthing, of the distribution system neutral is necessary to achieve several objectives, the most important of which is the safety of the public and utility personnel.

Contact Us

For more information, pricing, or custom energy solutions, please contact us:

Website: <https://gdroofing.co.za>

Email: sales@gdroofing.co.za

Phone: +27 72 418 9365

Address: 22 Electron Avenue, Isando, Johannesburg, 1600, South Africa

This document is for informational purposes only. Specifications subject to change without notice.

