

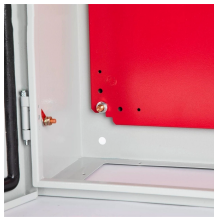
What quota should be applied to the guide optical cable



What quota should be applied to the guide optical cable



Support structures for fiber optic cable installations should be completed before the installation of the fiber optic cable itself. Outside plant structures should be installed in conformance with all permits ...



The information contained in this manual should serve as a guide to proper handling, installing, testing, and for troubleshooting problems with fiber optic cables.



If no specific recommendations are available from the cable manufacturer, the cable should not be pulled over a bend radius smaller than twenty (20) times the cable diameter.



Refer to the cable specification sheet for the specific allowed tension for each cable. Coils are required for all ribbon gel-free and gel-filled armor cables that are in a butt-type closure any other closure, or ...



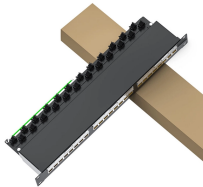
Learn the different fiber optic cable installation requirements with our expert guide to ensure optimal performance and durability in your network.



Get a complete guide to fiber optic & related products standards—from basics to advanced, covering all key details for full understanding.



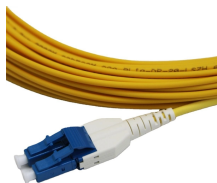
The Quota program is generally applied only to commercial importations. Freightclear helps importers adhere to customs regulations subject to quotas.



This Recommendation also describes how to mitigate the considerable risks and/or issues to which the optical fibre cable may be exposed when infrastructures are minimal during installation, maintenance ...



Absolute Quota allows low or no-duty up to a limit. Once the limit is reached no additional quantity may enter.



This document provides guidelines for the proper installation of fiber optic cable to avoid damage and ensure optimal performance.

Contact Us

For more information, pricing, or custom energy solutions, please contact us:

Website: <https://gdroofing.co.za>

Email: sales@gdroofing.co.za

Phone: +27 72 418 9365

Address: 22 Electron Avenue, Isando, Johannesburg, 1600, South Africa

This document is for informational purposes only. Specifications subject to change without notice.

