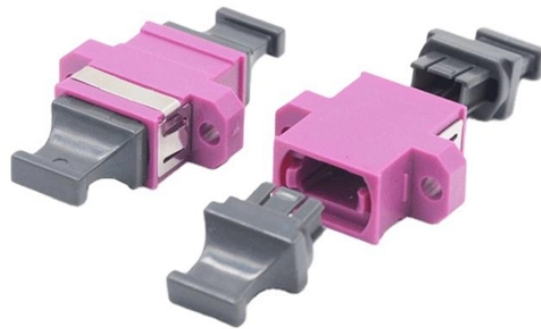


# What size should a household 11-circuit distribution box be



## Overview

Panel size is determined by NEC Article 220 load calculation. Most modern homes (2,000–4,000 sqft) require 200A service. The panel must have enough physical spaces for all circuits . The breaker box, or main electrical panel, is the central distribution point for a home's electrical service. It takes the main electrical service from the utility and divides it into individual circuits that run throughout the house. For tailored advice, it's always best to consult with a. A 2,000 sq ft home typically needs 20–25 circuits minimum; a 3,000+ sq ft home may need 35–45. General lighting load determines the minimum number of general-purpose circuits: New home electrical design — complete circuit schedule with wire sizes and breaker ratings Home renovation planning —. Find 11-Inch-Wide breaker boxes at Lowe's today. Then, select a main switch that handles your total load. Finally, choose safety devices like RCBOs and Surge Protection Devices (SPD) for the best protection against faults and lightning.

## What size should a household 11-circuit distribution box be



This guide explains standard electrical box dimensions by type, compares common sizes, and helps you select the right box for residential, commercial, and light industrial applications.



Residential Service Equipment: Upgrade Types and Sizing Determination breaker panel, the main breaker size, and number of breaker spaces available. Some specific older models of ...



This article guides you through selecting a distribution box that is both affordable and safe, emphasizing key features, configuration, and practical considerations.



Determine the right size for your electrical panel in our guide, covering load calculations, household needs, and tips for choosing the appropriate size.



Find 11-Inch-Wide breaker boxes at Lowe's today. Shop breaker boxes and a variety of electrical products online at Lowes .



Selecting the correct breaker box size is a complex process that balances current needs with future demands and strict safety regulations. While calculating the minimum required load ...



We put this guide together to simplify complex topics like choosing the right panel size, calculating total amperage, and assessing your household's electrical needs.



Professional home circuit calculator per NEC Article 210 and 220. Determines the total number of branch circuits, wire sizes, breaker ratings, and GFCI/AFCI protection requirements for residential electrical ...



Learn how to choose the right home distribution box with our expert guide. Compare circuit capacity, IP ratings, breaker types & avoid common mistakes.



Whether you're adding a home office, upgrading to an EV charger, or simply tired of tripped breakers, knowing what size panel you need is the first step toward a safe and future-proof electrical system.

## Contact Us

For more information, pricing, or custom energy solutions, please contact us:

Website: <https://gdroofing.co.za>

Email: [sales@gdroofing.co.za](mailto:sales@gdroofing.co.za)

Phone: +27 72 418 9365

Address: 22 Electron Avenue, Isando, Johannesburg, 1600, South Africa

This document is for informational purposes only. Specifications subject to change without notice.

