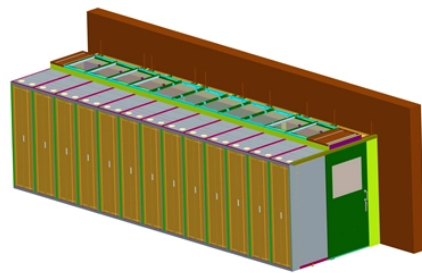


## What types of outdoor cable terminal boxes are there



## What types of outdoor cable terminal boxes are there



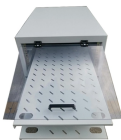
Fiber optic terminal boxes for FTTH and indoor cabling. Wall mount & desktop types. 4-24 ports. IP65 rated outdoor options.



Protect your outdoor electrical connections from rain, snow, sun & dust with our durable, UL Listed Daier outdoor junction boxes. Find the perfect size & style for outlets, switches, lights & timers.



The single service 2-gang Outdoor Ground Box is made from a UV rated nonmetallic material and has been designed to withstand the harsh outdoor environments.



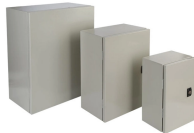
JERA LINE-China Factory produce high-quality fiber optic cables, fiber cable clamps, and fiber optic boxes for outdoor & Indoor FTTH. ISO 9001 certified.



Learn the main electrical junction box types, including materials, shapes, indoor and outdoor uses, and how to choose the right box for safe wiring.



Available in various types, outdoor cable boxes are engineered to meet specific power, data, and environmental demands. Below is a detailed breakdown of the most common configurations and their ...



Designed to meet NEMA and IP ratings, our waterproof junction boxes are ideal for outdoor use but versatile enough for indoor applications too. Choose from a variety of styles, including models with ...



Learn what an outdoor electrical junction box is, NEC 314 requirements, types like pull boxes and splice boxes, proper sizing rules, and when you need weatherproof protection.



Learn the main electrical junction box types, including materials, shapes, indoor and outdoor uses, and how to choose the right box for safe wiring.



Junction boxes can be found as either round or square boxes, round ones are more common, square ones tend to be used for higher current cables. Junction boxes are rated in amps (typically 5, 20 or ...



Compare fiber terminal box outdoor models by durability, protection, and scalability to find the best fit for your network and installation needs.



Our products are available in SC, ST, LC, and other connector types. Our outdoor termination boxes effectively protect and organize fiber cables. With waterproof and dustproof features, they provide ...

## Contact Us

For more information, pricing, or custom energy solutions, please contact us:

Website: <https://gdroofing.co.za>

Email: [sales@gdroofing.co.za](mailto:sales@gdroofing.co.za)

Phone: +27 72 418 9365

Address: 22 Electron Avenue, Isando, Johannesburg, 1600, South Africa

This document is for informational purposes only. Specifications subject to change without notice.

